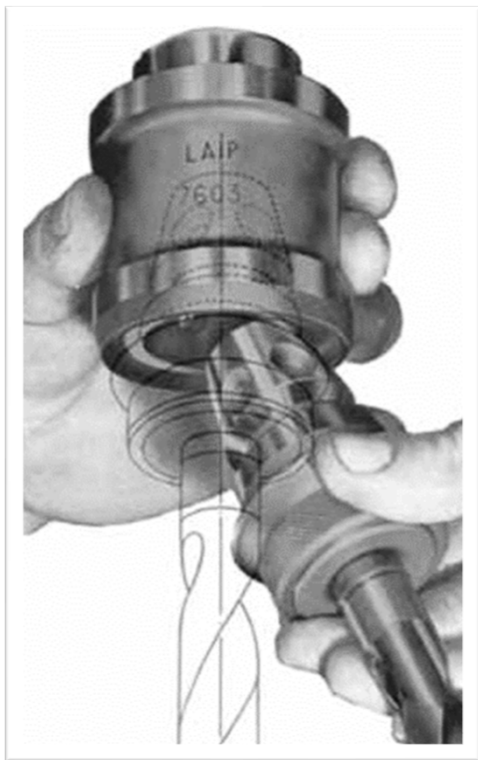




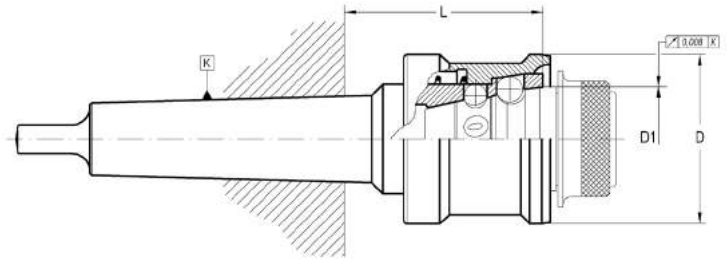
Pikavaihtoistukat porakoneille



QUICK-CHANGE HOLDER

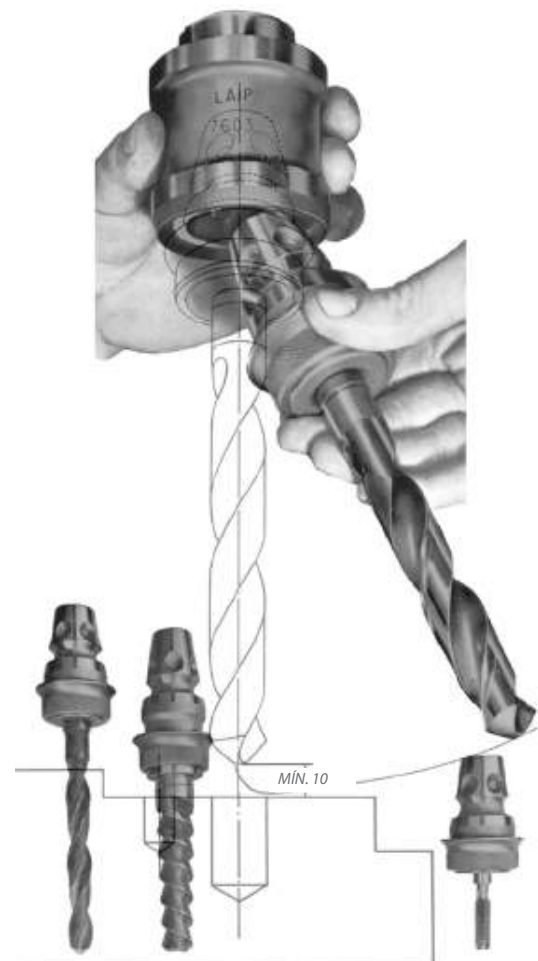


Without stopping the machine.



K	D1	L	D	COD.	Availability						
M2	40	77	63	006 02 01 03 02	■	304 01 00 08 73	304 01 00 10 31	305 01 40 00 20	305 09 06 01 02	351 06 00 01 21	351 06 00 01 22
M3	40	77	63	006 02 01 04 02	■	304 01 00 08 73	304 01 00 10 31	305 01 40 00 20	305 09 06 01 02	351 06 00 01 21	351 06 00 01 22
M4	40	78	63	006 02 01 05 02	■	304 01 00 08 73	304 01 00 10 31	305 01 40 00 20	305 09 06 01 02	351 06 00 01 21	351 06 00 01 22
M4	51,5	95	83	006 02 01 05 03	■	304 01 00 11 11	304 01 00 12 70	305 01 51 00 20	305 09 06 01 03	351 06 00 01 31	351 06 00 01 32
M5	51,5	95	83	006 02 01 06 03	■	304 01 00 11 11	304 01 00 12 70	305 01 51 00 20	305 09 06 01 03	351 06 00 01 31	351 06 00 01 32

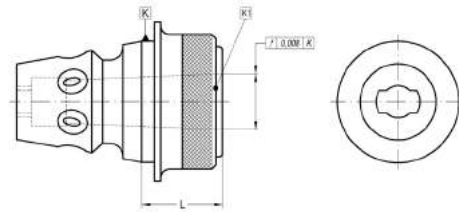
- Without stopping the machine.
- Maximum rotation speed 2000 r.p.m.
- Maximum concentricity achieved by taper coupling.
- Just 10 mm clearance between workpiece and tool is enough.
- Rotation in either direction.
- Equally effective in vertical or horizontal plain.



QUICK CHANGE MT ADAPTERS



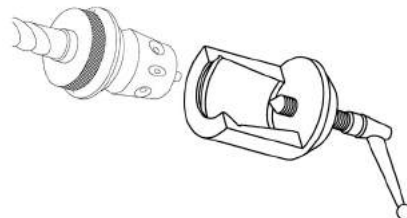
For tapered Morse taper tools DIN 228-B.



K	K1	L	COD.	Availability		
40	M1	29	006 99 01 02 02	■	351 06 99 01 22	305 01 34 00 20
40	M2	29	006 99 01 02 03	■	351 06 99 01 22	305 01 34 00 20
40	M3	44	006 99 01 02 04	■	351 06 99 01 22	305 01 34 00 20
51,5	M1	34	006 99 01 03 02	■	351 06 99 01 32	305 01 45 00 20
51,5	M2	34	006 99 01 03 03	■	351 06 99 01 32	305 01 45 00 20
51,5	M3	34	006 99 01 03 04	■	351 06 99 01 32	305 01 45 00 20
51,5	M4	55	006 99 01 03 05	■	351 06 99 01 32	305 01 45 00 20

EJECTOR DEVICE

For tools set up on 006 99 01 ...

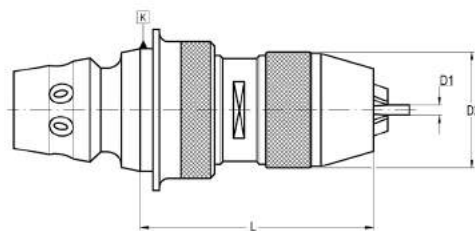


K	COD.	Availability
40	006 99 09 01 02	■
51,5	006 99 09 01 03	■

QUICK CHANGE SHORT DRILL CHUCK



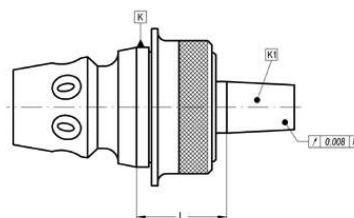
For tools with DIN-6327 shank.



K	D1	L	D2	COD.	Availability					
40	0-8	82	36	006 99 07 20 08	■	351 06 99 01 22	305 01 34 00 20	351 02 60 00 08	351 02 61 00 08	020 99 03 00 08
51,5	1-13	89	48	006 99 07 31 13	■	351 06 99 01 32	305 01 45 00 20	351 02 60 01 13	351 02 61 01 13	020 99 03 01 13

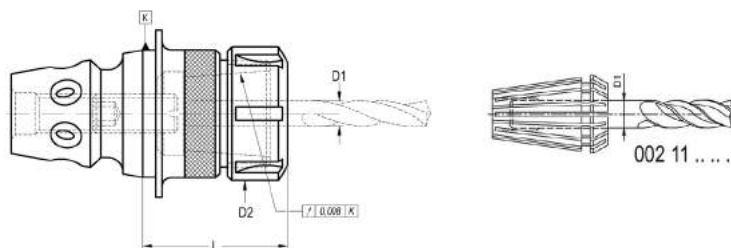
QUICK CHANGE DRILL CHUCK ADAPTERS

For DIN 238 or JACOBS.



K	K1	L	COD.	Availability		
40	B-12	32	006 99 02 02 01	■	351 06 99 01 22	305 01 34 00 20
40	B-16	34	006 99 02 02 02	■	351 06 99 01 22	305 01 34 00 20
40	J-2	34	006 99 02 02 13	■	351 06 99 01 22	305 01 34 00 20
40	J-6	34	006 99 02 02 18	■	351 06 99 01 22	305 01 34 00 20
51,5	B-16	39	006 99 02 03 02	■	351 06 99 01 32	305 01 45 00 20

QUICK CHANGE COLLET ADAPTERS FOR DIN 6499 (ER) COLLETS

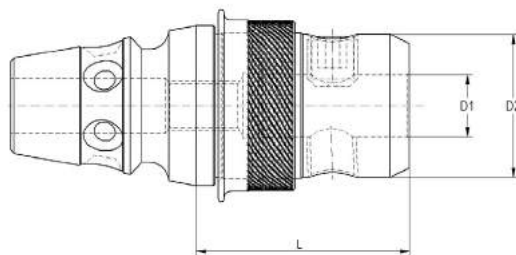





K	SIZE	D1 máx.	D2	L	COD.	Availability			
40	(ER25)	16	42	60	006 99 06 06 25	■	301 99 02 16 01	351 06 99 01 22	305 01 34 00 20
51,5	(ER25)	16	42	63	006 99 06 06 35	■	301 99 02 16 01	351 06 99 01 32	305 01 45 00 20
51,5	(ER32)	20	50	67	006 99 06 06 36	■	301 99 02 16 01	-	-
51,5	(ER40)	26	63	100	006 99 06 06 37	■	301 99 02 16 01	-	-

QUICK CHANGE WELDON + WHISTLENOTCH ADAPTERS



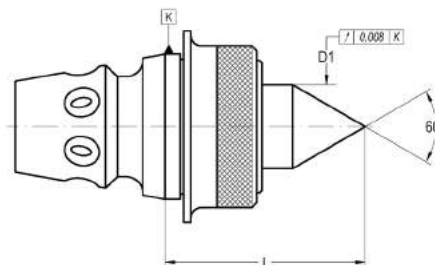
For end mills with shank DIN 1835-B and / or DIN 1835-E.





K	D1	L	D2	COD.	Availability			
51,5	16	69	46	006 99 12 03 16	■	351	301	301
51,5	20	69	46	006 99 12 03 20	■	351	301	301
51,5	25	92	46	006 99 12 03 25	■	351	301	301
51,5	* 32	74	72	006 99 12 03 32	■	-	301 02 70 20 01	301 01 05 20 20
51,5	* 40	96	80	006 99 12 03 40	■	-	301 02 70 20 01	301 01 05 20 20
51,5	* 50	106	98	006 99 12 03 50	■	-	301 02 70 20 01	301 01 05 24 25

* Without exterior ring. To change the tool it is necessary to stop the machine.

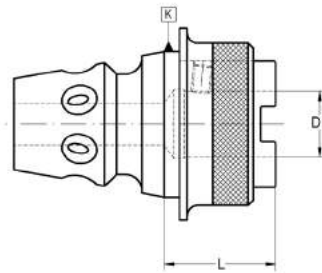
QUICK CHANGE 60° CENTERING POINT






K	D1	L	COD.	Availability		
40	26	61	006 99 03 02 01	■	351 06 99 01 22	305 01 34 00 20
51,5	26	66	006 99 03 03 01	■	351 06 99 01 32	305 01 45 00 20

QUICK CHANGE TAPPING ADAPTERS

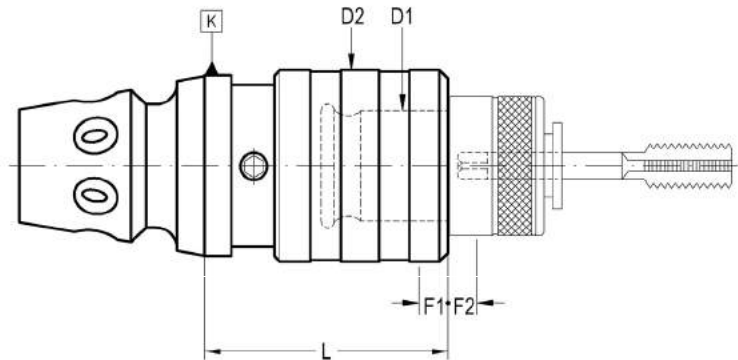
For BiLZ type tap adapters holders



K	CAP.	D1	L	COD.	Availability			
40	M1-M10	13	29	006 99 05 02 01	<input type="checkbox"/>	301 01 03 05 10	351 06 99 01 22	305 01 34 00 20
40	M3-M12 (M16)*	19	29	006 99 05 02 02	<input checked="" type="checkbox"/>	301 01 03 05 08	351 06 99 01 22	305 01 34 00 20
51,5	M1-M10	13	41	006 99 05 03 01	<input type="checkbox"/>	301 01 03 05 10	351 06 99 01 32	305 01 45 00 20
51,5	M3-M12 (M16)*	19	41	006 99 05 03 02	<input checked="" type="checkbox"/>	301 01 03 06 12	351 06 99 01 32	305 01 45 00 20
51,5	M8-M20 (M30)*	31	41	006 99 05 03 03	<input checked="" type="checkbox"/>	301 01 03 06 08	351 06 99 01 32	305 01 45 00 20

QUICK CHANGE TAPPING ADAPTERS WITH AXIAL COMPENSATION

Double axial compensation.



K	CAP.	D1	L	D2	F1	F2	COD.	Availability
40	M3-M12 (M16)*	19	45	36	7,5	7,5	006 99 19 52 22	<input checked="" type="checkbox"/>
40	M8-M20 (M30)*	31	69	53	12,5	12,5	006 99 19 52 23	<input checked="" type="checkbox"/>
51,5	M3-M12 (M16)*	19	46	36	7,5	7,5	006 99 19 52 32	<input checked="" type="checkbox"/>
51,5	M8-M20 (M30)*	31	69	53	12,5	12,5	006 99 19 52 33	<input checked="" type="checkbox"/>

- F1 Compression run.
- F2 Extension run.



Oy TERÄSKONTTORI



TERÄSKONTTORI



LASTUAVAT



MITTAUSVÄLINEET



HIONTA



TYÖKALUPITIMET



KAPPALEEN KIINNITTIMET



VALAISIMET



PIENKONEET



MERKKAUS



TARVIKKEET



AUTOMAATIO

TERÄSKONTTORI

www.teraskonttori.fi

Myynti:  tilaus@teraskonttori.fi

 030 600 3611

 www.neTKonttori.fi