

RQC/RTP SERIES

Automatic Tool Changers | Features and Benefits

Robotic applications:

Perfect for those flexible/multiple tooling applications utilizing one Robot. This product was designed with exceptional repeatability, high rigidity & load capacity to make it ideal for any robotic application.

Automation applications:

End effector tooling and interchangeable fixturing can be changed quickly and easily to accommodate many different styles of parts on the same assembly machine or machining center.

Highly configurable, modular design (RQC/RTP):

The Modular RQC series easily accommodates up to (4) optional modular interfaces, offering a high level of flexibility.

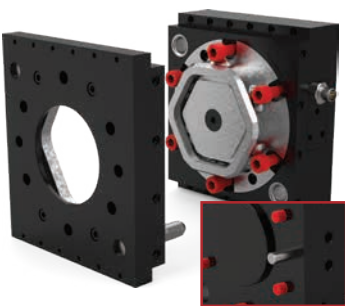
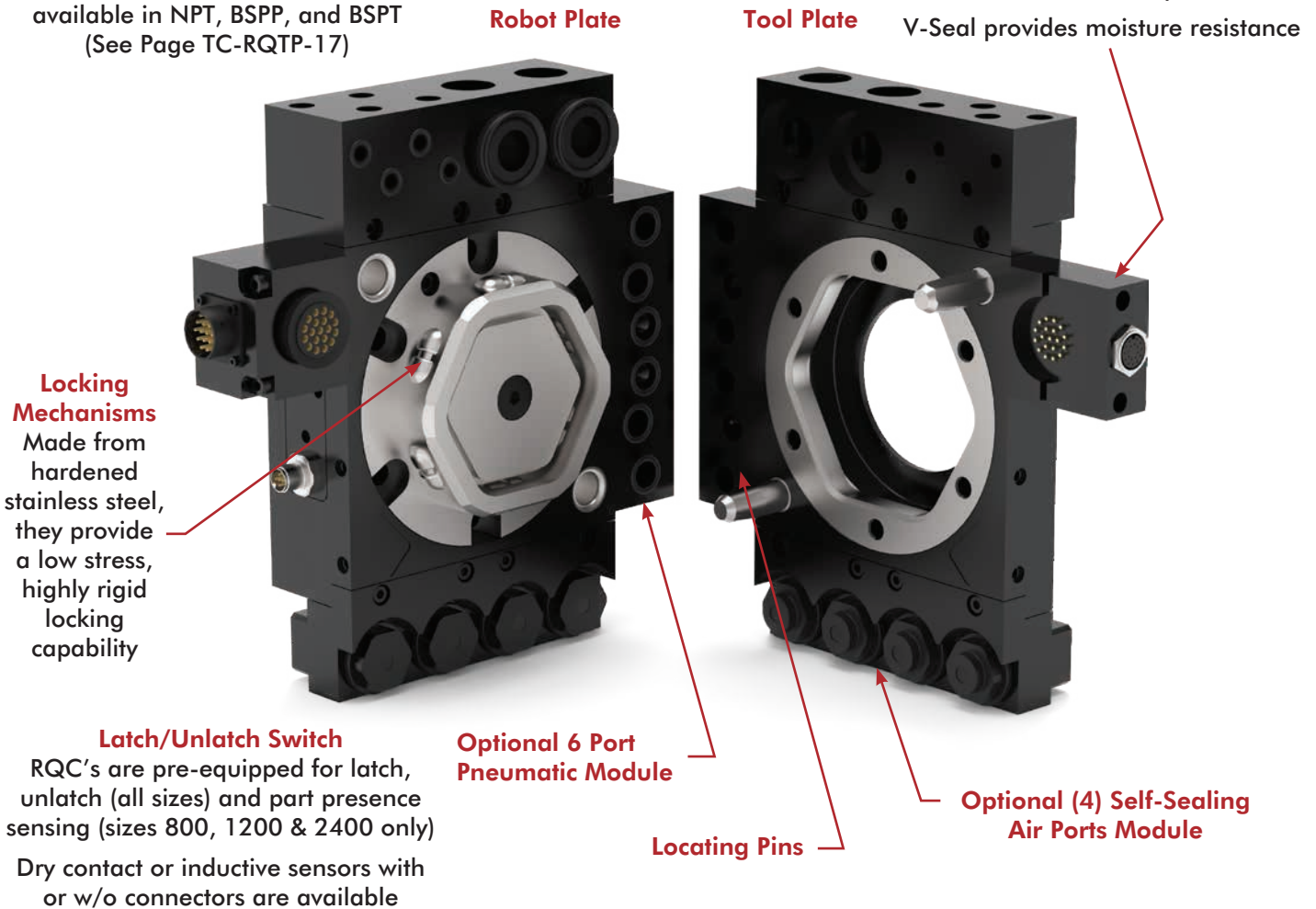
Additional Optional Air, Fluid, Electrical Modules are Available.

Air and fluid ports modules are available in NPT, BSPP, and BSPT (See Page TC-RQTP-17)

Optional 19 Pin I/O Module

Spring loaded contacts are recessed for a better protection

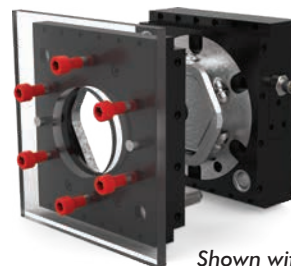
V-Seal provides moisture resistance



Robot Plate

has counterbored holes for mounting with a dowel pin hole, a raised boss for location, and features a ISO9409-1 mounting pattern

Back Side of Robot Plate



Tool Plate

has tapped holes, two dowel pin holes for accurate location of payload, and features a ISO9409-1 mounting pattern

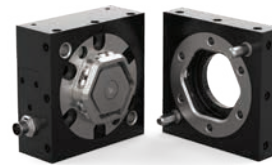
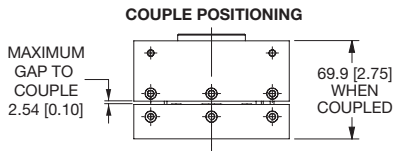
Shown with customer supplied adapter plate.

RQC/RTP SERIES

Automatic Tool Changers | Technical Information

RQC-200/RTP-200

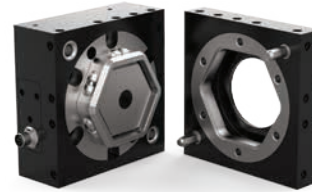
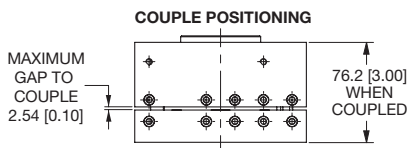
Combined Weight: 3 Kg [6.7 lb]
 Max. Payload*: 90 Kg [200 lb]
 Max. Moment: 810 Nm [7200 in-lb]



RQC-200 Robot Plate
RTP-200 Tool Plate

RQC-400/RTP-400

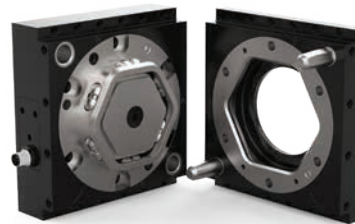
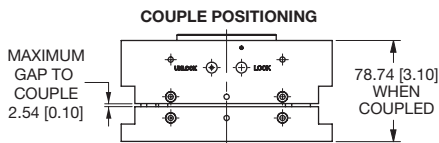
Combined Weight: 4.7 Kg [10.4 lb]
 Max. Payload*: 180 Kg [400 lb]
 Max. Moment: 1580 Nm [14000 in-lb]



RQC-400 Robot Plate
RTP-400 Tool Plate

RQC-800/RTP-800

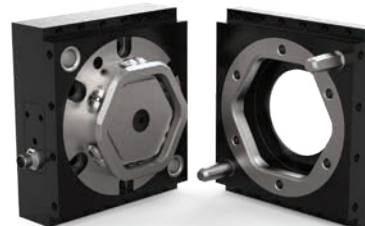
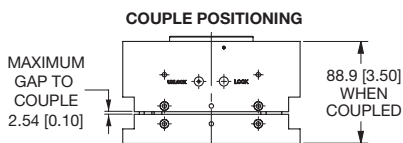
Combined Weight: 7.1 Kg [15.8 lb]
 Max. Payload*: 360 Kg [800 lb]
 Max. Moment: 2490 Nm [22000 in-lb]



RQC-800 Robot Plate
RTP-800 Tool Plate

RQC-1200/RTP-1200

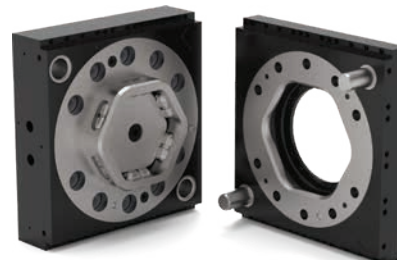
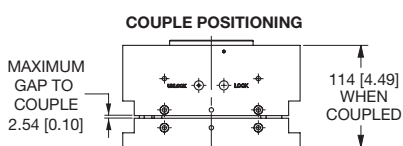
Combined Weight: 8.3 Kg [18.4 lb]
 Max. Payload*: 550 Kg [1200 lb]
 Max. Moment: 3390 Nm [30000 in-lb]



RQC-1200 Robot Plate
RTP-1200 Tool Plate

RQC-2400/RTP-2400

Combined Weight: 30 Kg [66.1 lb]
 Max. Payload*: 1089 Kg [2400 lb]
 Max. Moment: 7000 Nm [61955 in-lb]



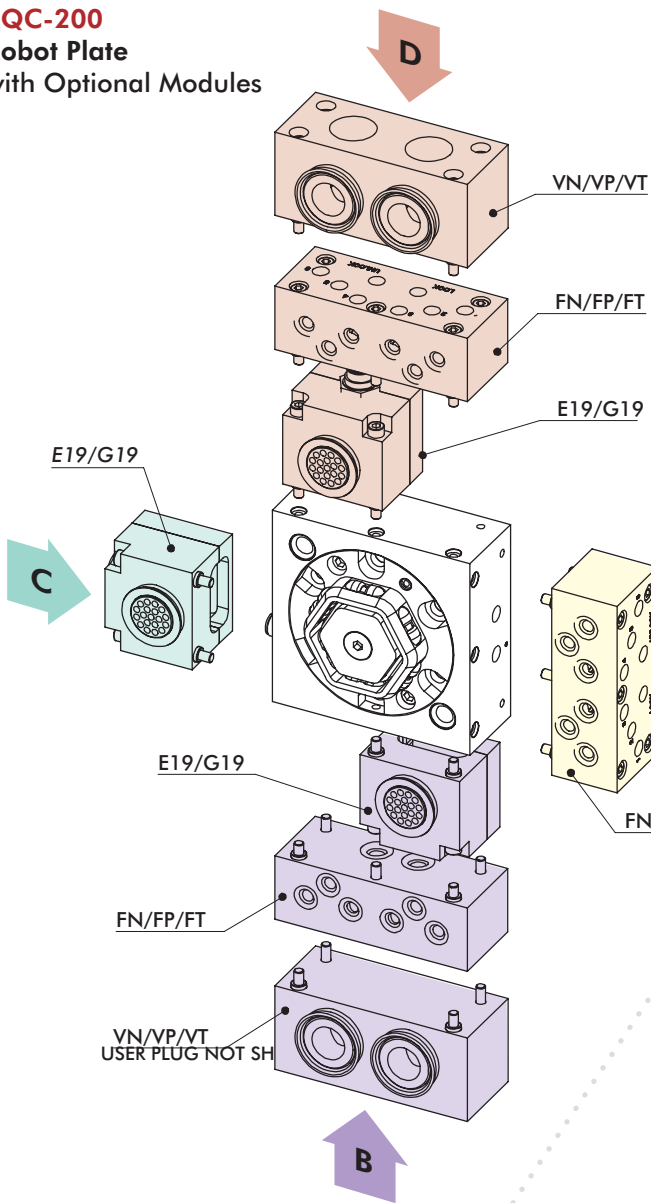
RQC-2400 Robot Plate
RTP-2400 Tool Plate

*Depending on your application parameters please contact DESTACO for validation.

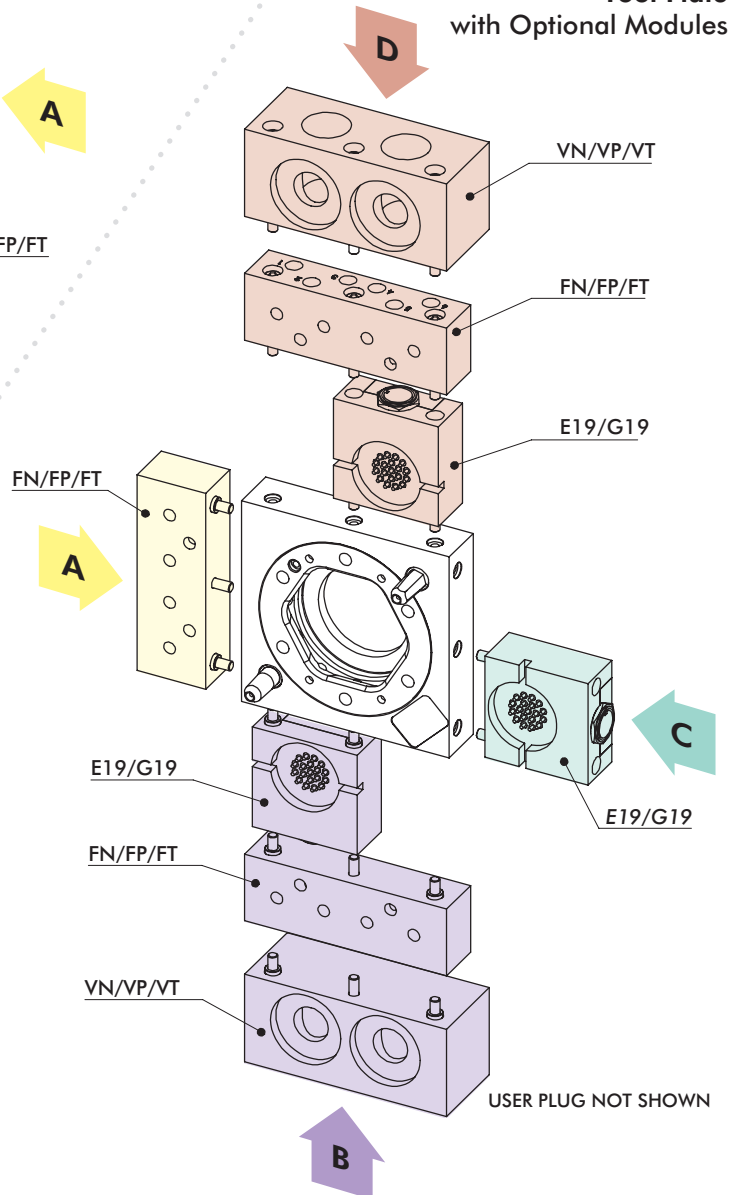
RQC-200/RTP-200

Automatic Tool Changers | Module Usage Illustrations

RQC-200 Robot Plate with Optional Modules

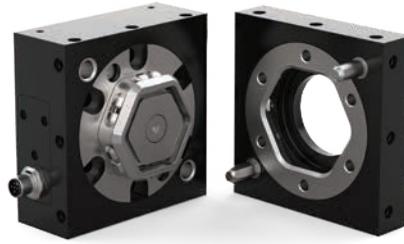


RTP-200 Tool Plate with Optional Modules



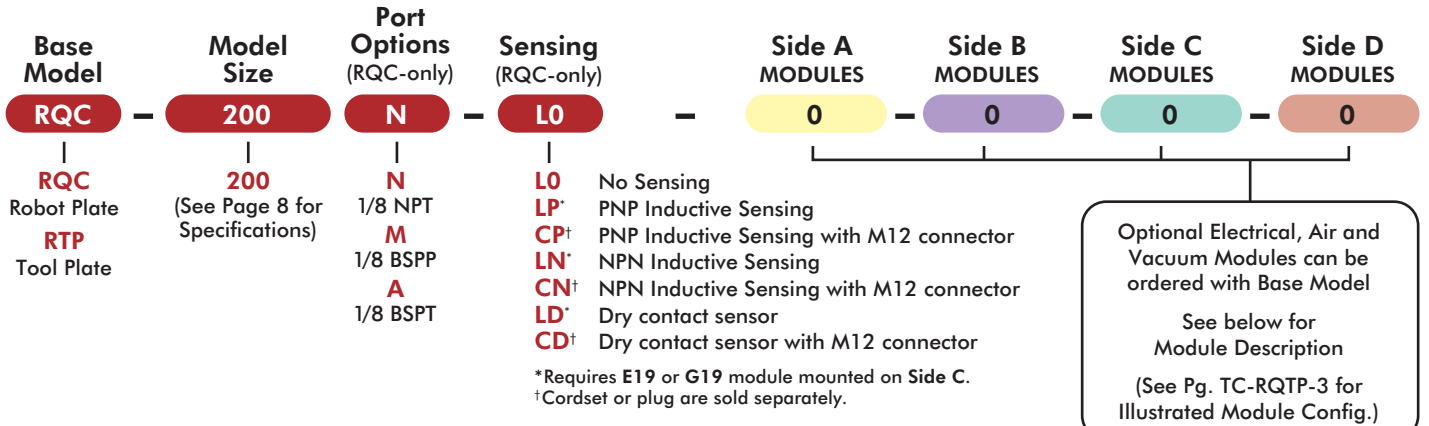
RQC-200/RTP-200

Automatic Tool Changers | Ordering Information



Robot Plate
RQC-200

Tool Plate
RTP-200



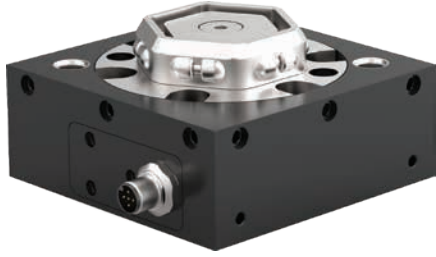
Side A	Side B	Side C	Side D	Order Code	Optional Modules
●	●	●	●	0	No Module
	●	●	●	E19†	19 pin, 3 Amp, 48 VDC Module w/Turck M16 Conn, w/o Cordset
	●	●	●	G19	19 pin, 5 Amp, 120 VDC Module w/Industrial User Conn., w/o Cable
●	●		●	FN	6X 1/8" NPT Air Ports Module, Face Seal, 10 Bar
●	●		●	FP	6X 1/8" BSPP Air Ports Module, Face Seal, 10 Bar
●	●		●	FT	6X 1/8" BSPT Air Ports Module, Face Seal, 10 Bar
	●		●	VN	2X 3/4" Vacuum NPT Ports Module, Face Sealing
	●		●	VP	2X 3/4" Vacuum BSPP Ports Module, Face Sealing
	●		●	VT	2X 3/4" Vacuum BSPT Ports Module, Face Sealing

†Cordset or plug are sold separately.

NOTE: Only (1) module can be mounted per side. Modules usage is based on the size of the Base Model and which side the module can be mounted.

RQC-200 (ROBOT PLATE)

Automatic Tool Changers | Technical Specifications | Dimensions



Specification:

Max. Payload* **W**: 90 Kg [200 lb]

Weight: 2 Kg [4.41 lb]

Cylinder Bore: \varnothing 53mm [2.09in]

Displacement: 41.3 cm³ [2.52in³]

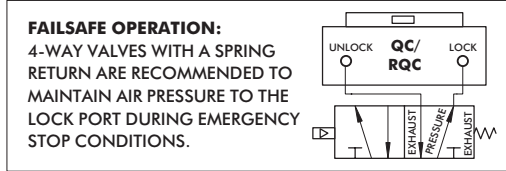
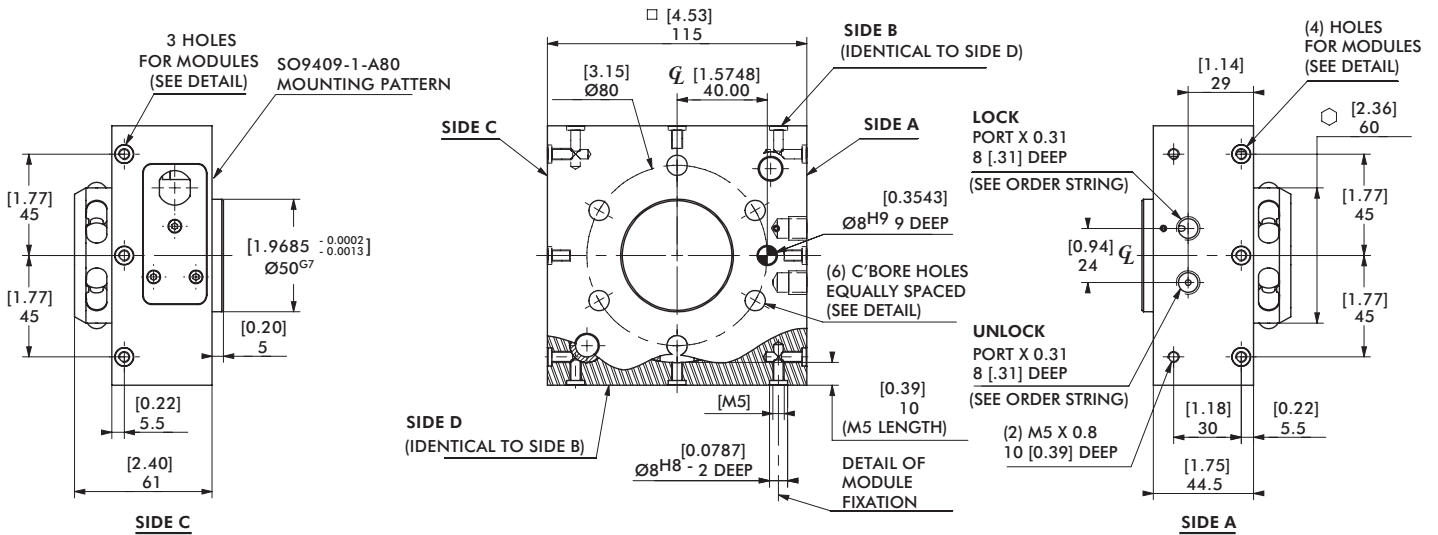
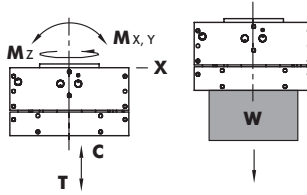
*Depending on your application parameters please contact DESTACO for validation.

Loading Capacity:

Max. Tensile **T**: 1330 N [300 lb]

Max. Compressive **C**: 1780 N [400 lb]

Max. Moment (**M_x/M_y/M_z**): 810 Nm [7200 in-lb]



UNLESS OTHERWISE NOTED ALL TOLERANCES ARE AS SHOWN BELOW

IMPERIAL ([IN.])	METRIC (MM)
0.00 = ±.01	[0] = [±.25]
0.000 = ±.005	[0.01] = [±.13]
0.0000 = ±.0005	[0.00] = [±.013]

DIMENSIONS ARE SYMMETRICAL ABOUT CENTERLINE
 THIRD ANGLE PROJECTION
 ALL DOWEL HOLES ARE SF (SLIP FIT). LOCATIONAL TOLERANCE ±.0005" OR [±.013MM]
 METRIC THREADS COURSE PITCH

RTP-200 (TOOL PLATE)

Automatic Tool Changers | Technical Specifications | Dimensions

Specification:

Max. Payload* **W**: 90 Kg [200 lb]

Weight: 1 Kg [2.2 lb]

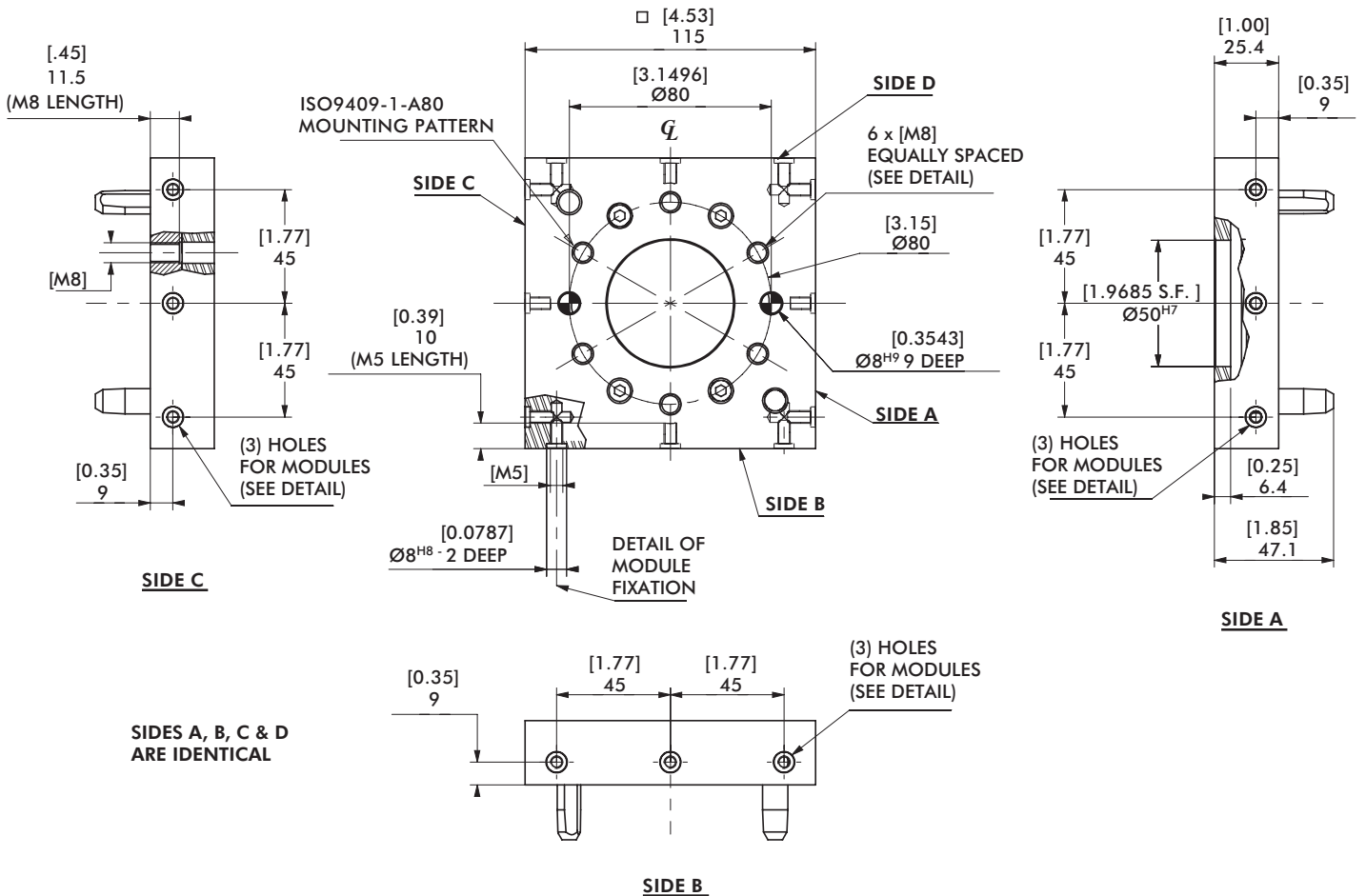
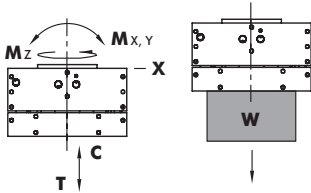
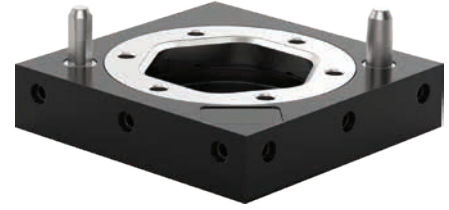
*Depending on your application parameters please contact DESTACO for validation.

Loading Capacity:

Max. Tensile **T**: 1330 N [300 lb]

Max. Compressive **C**: 1780 N [400 lb]

Max. Moment ($M_x/M_y/M_z$): 810 Nm [7200 in-lb]



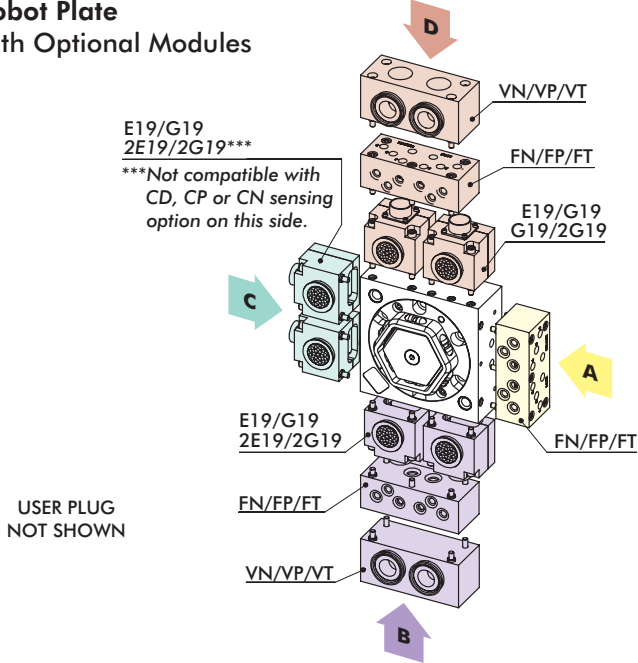
UNLESS OTHERWISE NOTED ALL TOLERANCES ARE AS SHOWN BELOW

IMPERIAL ([IN.])	METRIC (MM)
0.00 = ± .01	[0] = [± .25]
0.000 = ± .005	[0.0] = [± .13]
0.0000 = ± .0005	[0.00] = [± .013]

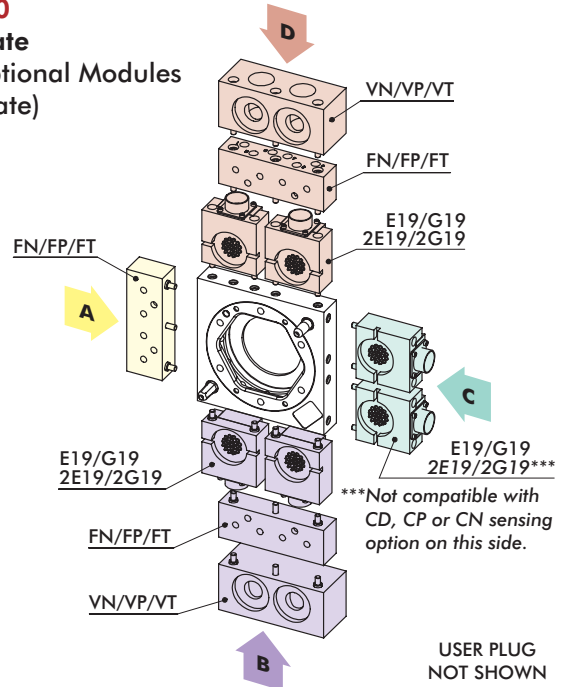
RQC-400, 800, 1200/RTP-400, 800, 1200

Automatic Tool Changers | Module Usage Illustrations

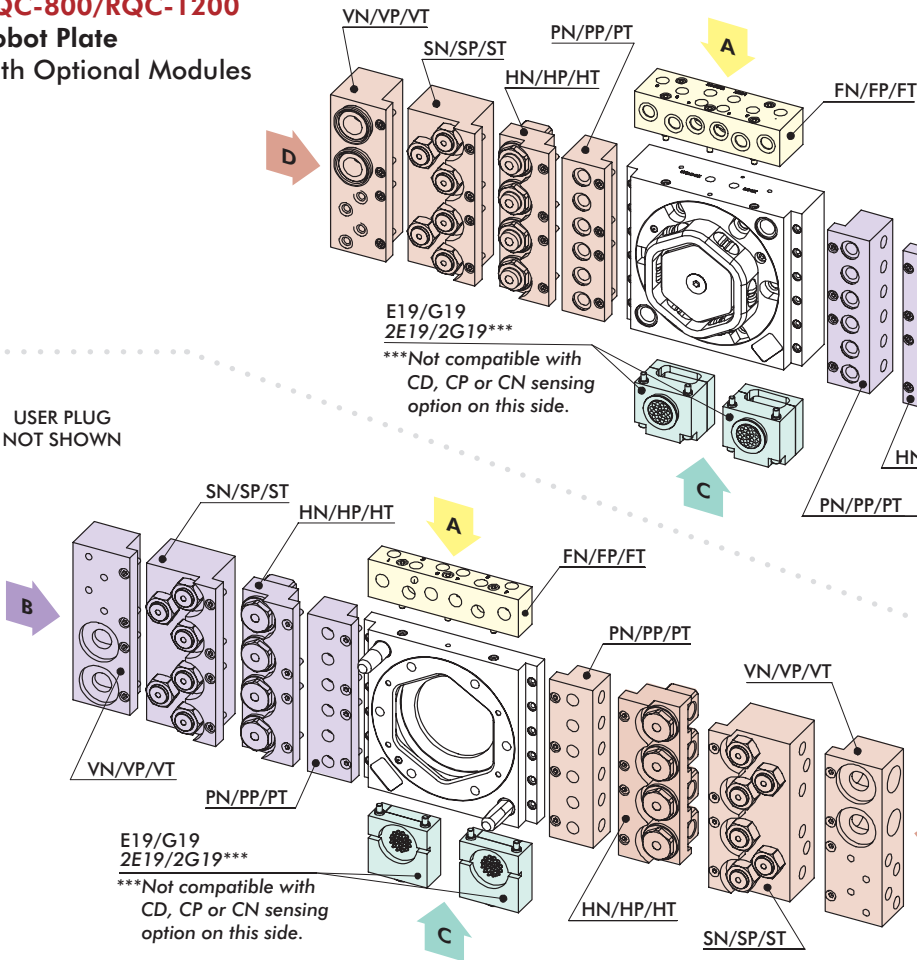
RQC-400 Robot Plate with Optional Modules



RTP-400 Tool Plate with Optional Modules (Tool Plate)

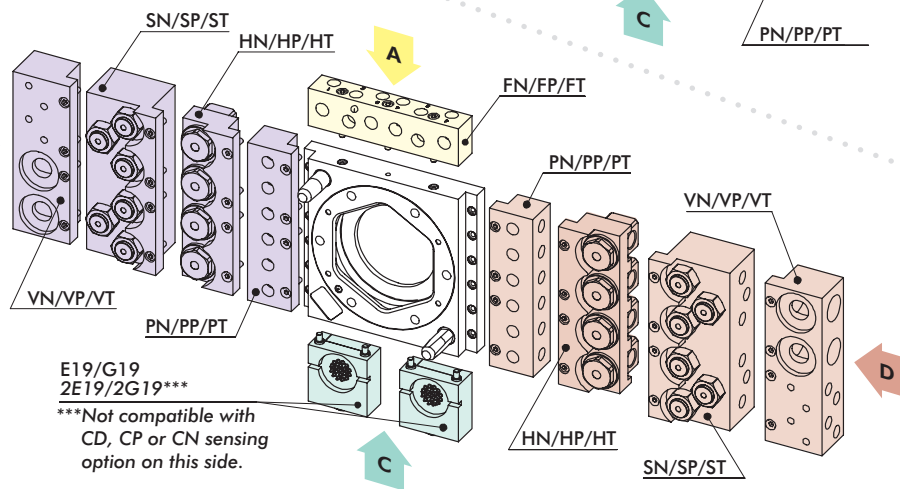


RQC-800/RQC-1200 Robot Plate with Optional Modules



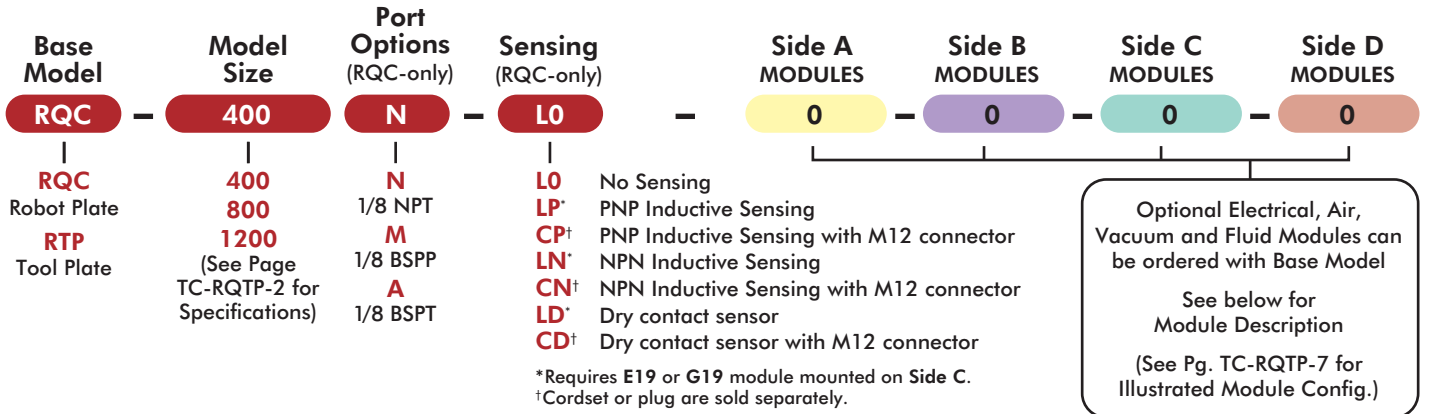
NOTE: Only (1) module can be mounted per side (except 2E19, 2G19 which are composed of (2) modules)

RTP-800/RTP-1200 Tool Plate with Optional Modules



RQC-400, 800, 1200/RTP-400, 800, 1200

Automatic Tool Changers | Ordering Information



400	800/1200	Side A	Side B	Side C	Side D	Order Code	Optional Modules
●	●	●	●	●	●	0	No Module
	●			●		E19†	19 pin, 3 Amp, 48 VDC Module w/Turck M12 Conn, w/o Cordset
	●			●***		2E19†***	2X 19 pin, 3 Amp, 48 VDC Module w/Turck M12 Conn, w/o Cordset
	●			●		G19	19 pin, 5 Amp, 120 VDC Module w/Industrial User Conn., w/o Cable
	●			●***		2G19***	2X 19 pin, 5 Amp, 120 VDC Module w/Industrial User Conn., w/o Cable
●			●	●	●	E19†	19 pin, 3 Amp, 48 VDC Module w/Turck M12 Conn, w/o Cordset
●			●	●***	●	2E19†***	2X 19 pin, 3 Amp, 48 VDC Module w/Turck M12 Conn, w/o Cordset
●			●	●	●	G19	19 pin, 5 Amp, 120 VDC Module w/Industrial User Conn., w/o Cable
●			●	●***	●	2G19***	2X 19 pin, 5 Amp, 120 VDC Module w/Industrial User Conn., w/o Cable
●		●	●		●	FN	6X 1/8" NPT Air Ports Module, Face Seal, 10 Bar
●		●	●		●	FP	6X 1/8" BSPP Air Ports Module, Face Seal, 10 Bar
●		●	●		●	FT	6X 1/8" BSPT Air Ports Module, Face Seal, 10 Bar
	●	●	●		●	FN	6X 1/4" NPT Air Ports Module, Face Seal, 10 Bar
	●	●	●		●	FP	6X 1/4" BSPP Air Ports Module, Face Seal, 10 Bar
	●	●	●		●	FT	6X 1/4" BSPT Air Ports Module, Face Seal, 10 Bar
	●		●		●	PN	6X 1/4" NPT Air Ports Module, Face Seal, 10 Bar
	●		●		●	PP	6X 1/4" BSPP Air Ports Module, Face Seal, 10 Bar
	●		●		●	PT	6X 1/4" BSPT Air Ports Module, Face Seal, 10 Bar
	●		●		●	SN	6X 1/4" NPT Air Ports Module, Self Sealing, 10 Bar
	●		●		●	SP	6X 1/4" BSPP Air Ports Module, Self Sealing, 10 Bar
	●		●		●	ST	6X 1/4" BSPT Air Ports Module, Self Sealing, 10 Bar
●			●		●	VN	2X 3/4" Vacuum NPT Ports Module, Face Sealing
●			●		●	VP	2X 3/4" Vacuum BSPP Ports Module, Face Sealing
●			●		●	VT	2X 3/4" Vacuum BSPT Ports Module, Face Sealing
	●		●		●	VN	2X 3/4" Vacuum + 4 X 1/4" Air NPT Ports Module, Face Sealing
	●		●		●	VP	2X 3/4" Vacuum + 4 X 1/4" Air BSPP Ports Module, Face Sealing
	●		●		●	VT	2X 3/4" Vacuum + 4 X 1/4" Air BSPT Ports Module, Face Sealing
	●		●		●	HN	4X 3/8" NPT Fluid Ports Module, 100 Bar
	●		●		●	HP	4X 3/8" BSPP Fluid Ports Module, 100 Bar
	●		●		●	HT	4X 3/8" BSPT Fluid Ports Module, 100 Bar

†Cordset or plug are sold separately. ***Not compatible with CD, CP or CN sensing option on Side C.

NOTE: Only (1) module can be mounted per side. (Except 2E19 and 2G19, which are composed of (2) modules). Modules usage is based on the size of the Base Model and which side the module can be mounted.

Electrical and pneumatic accessories are ordered separately.

Please note some electrical accessories can only be used with certain modules for either RQC or RTP "Base Models".

For pneumatic accessories, size of "Base Model" is considered.

ELECTRICAL ACCESSORIES

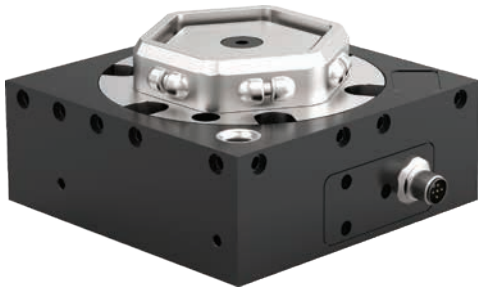
- ELCT-048 90° Female Plug, w/o Cable, Solder Type, Cable Clamp for G19 (RQC Only)
- ELCT-049 90° male Plug, w/o Cable, Solder Type, Cable Clamp for G19 (RTP Only)
- CABL-028 90° Female M12 Cordset with 2M Cable for CP, CN, and CD (RQC Only)
- CABL-029 90° Female Cordset with 4M Cable for E19 (RQC Only)
- CABL-031 90° male Cordset with 2M Cable for E19 (RTP Only)
- OSRK-004 PNP Inductive Sensor Repair Kit (RQC Only)
- OSRK-005 NPN Inductive Sensor Repair Kit (RQC Only)
- OSRK-006 Dry Contact Sensor Repair Kit (RQC Only)

PNEUMATIC ACCESSORIES

- SLKT-402 RQC-400 Standard Seal Repair Kit
- SLKT-403 RQC-800 Standard Seal Repair Kit
- SLKT-404 RQC-1200 Standard Seal Repair Kit

RQC-400 (ROBOT PLATE)

Automatic Tool Changers | Technical Specifications | Dimensions



Specification:

Max. Payload* W: 180 Kg [400 lb]

Weight: 3.6 Kg [7.94 lb]

Cylinder Bore: Ø73mm [2.87in]

Displacement: 80.9 cm³ [4.93in³]

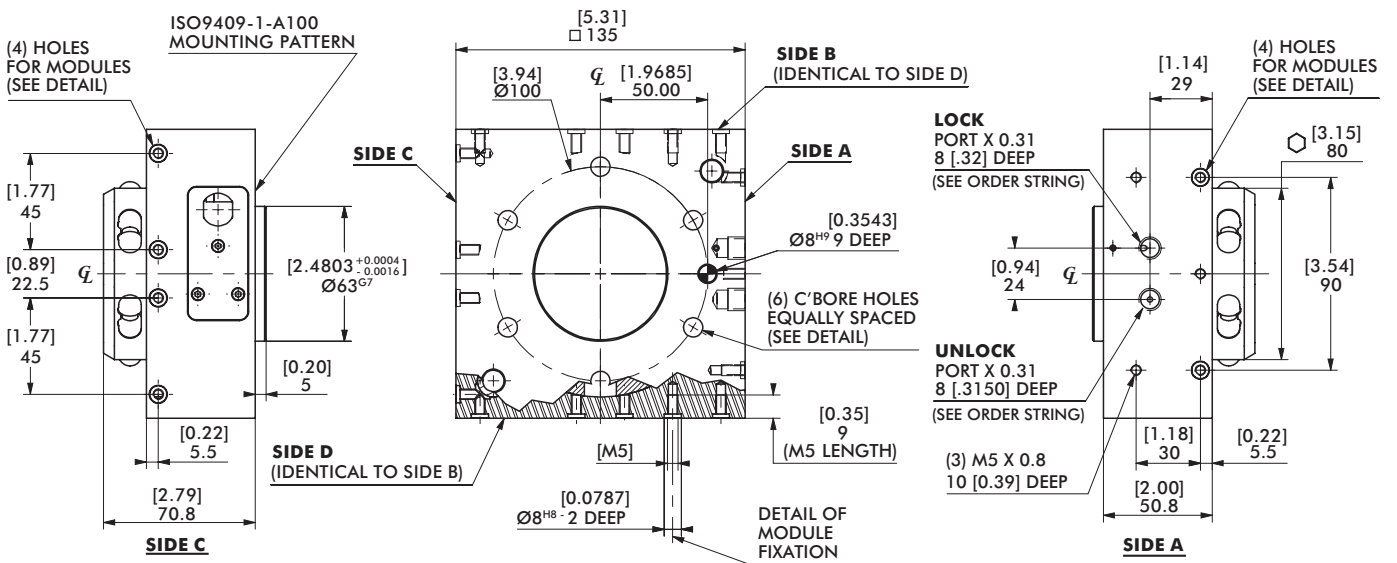
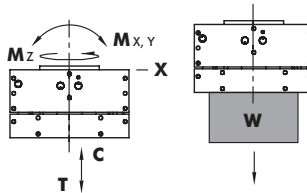
*Depending on your application parameters please contact DESTACO for validation.

Loading Capacity:

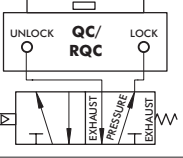
Max. Tensile T: 2670 N [600 lb]

Max. Compressive C: 3560 N [800 lb]

Max. Moment (M_x/M_y/M_z): 1580 Nm [14000 in-lb]



FAILSAFE OPERATION:
4-WAY VALVES WITH A SPRING RETURN ARE RECOMMENDED TO MAINTAIN AIR PRESSURE TO THE LOCK PORT DURING EMERGENCY STOP CONDITIONS.



UNLESS OTHERWISE NOTED ALL TOLERANCES ARE AS SHOWN BELOW

IMPERIAL ([IN.])	METRIC (MM)
0.00 = ± .01	[0] = [±.25]
0.000 = ± .005	[0.0] = [±.13]
0.0000 = ± .0005	[0.00] = [±.013]

RTP-400 (TOOL PLATE)

Automatic Tool Changers | Technical Specifications | Dimensions

Specification:

Max. Payload* W: 180 Kg [400 lb]

Weight: 1.1 Kg [2.43 lb]

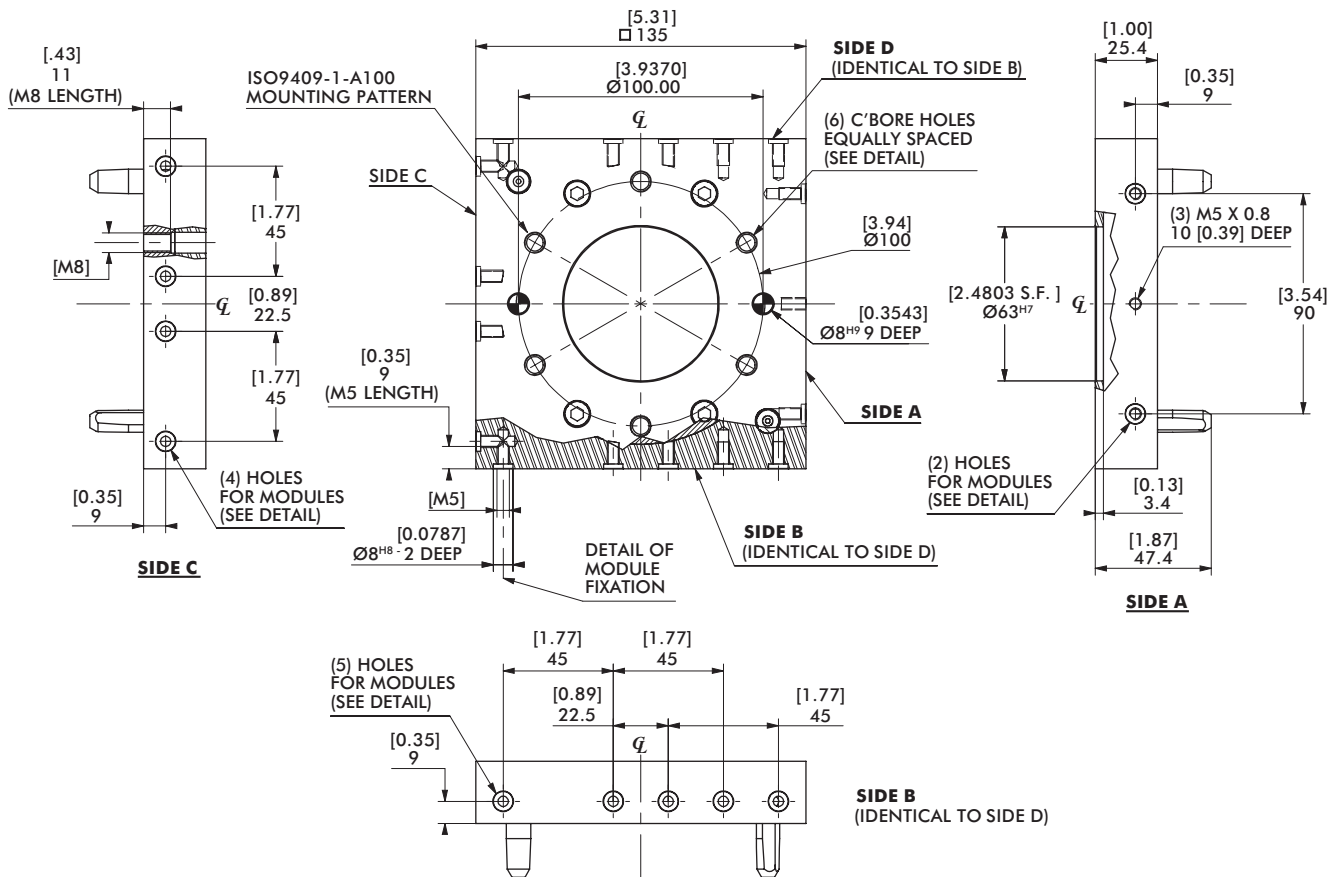
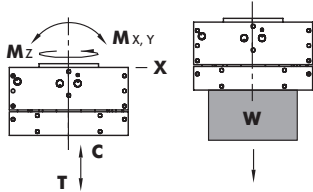
*Depending on your application parameters please contact DESTACO for validation.

Loading Capacity:

Max. Tensile T: 2670 N [600 lb]

Max. Compressive C: 3560 N [800 lb]

Max. Moment (M_x/M_y/M_z): 1580 Nm [14000 in-lb]



UNLESS OTHERWISE NOTED ALL TOLERANCES ARE AS SHOWN BELOW

IMPERIAL ([IN.])	METRIC (MM)
0.00 = ±.01	[0] = [±.25]
0.000 = ±.005	[0.0] = [±.13]
0.0000 = ±.0005	[0.00] = [±.013]

☉ DIMENSIONS ARE SYMMETRICAL ABOUT CENTERLINE
 ▽ THIRD ANGLE PROJECTION
 ⦿ ALL DOWEL HOLES ARE SF (SLIP FIT). LOCAL TOLERANCE ±.0005" OR [±.013MM]
 ⦿ METRIC THREADS COURSE PITCH

RQC-800, RQC-1200 (ROBOT PLATE)

Automatic Tool Changers | Technical Specifications | Dimensions



RQC-800 Specification:

Max. Payload* W: 360 Kg [800 lb]
 Weight: 5.3 Kg [11.68 lb]
 Cyl. Bore: Ø80mm [3.15in]
 Displacement: 95.6 cm³ [5.83in³]

*Depending on your application
 paramaters please contact DESTACO
 for validation.

Loading Capacity:

Max. Tensile T:
 5340 N [1200 lb]
 Max. Compressive C:
 7120 N [1600 lb]
 Max. Moment (M_x/M_y/M_z):
 2490 Nm [22000 in-lb]

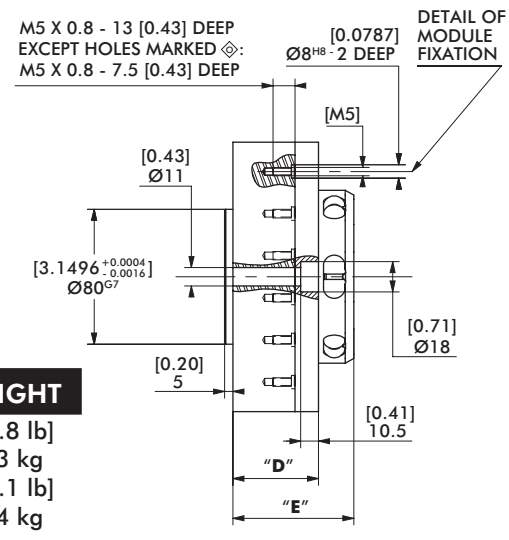
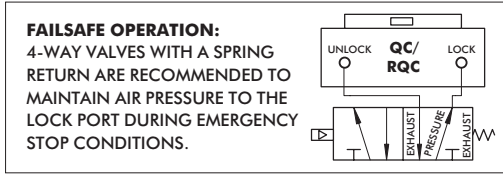
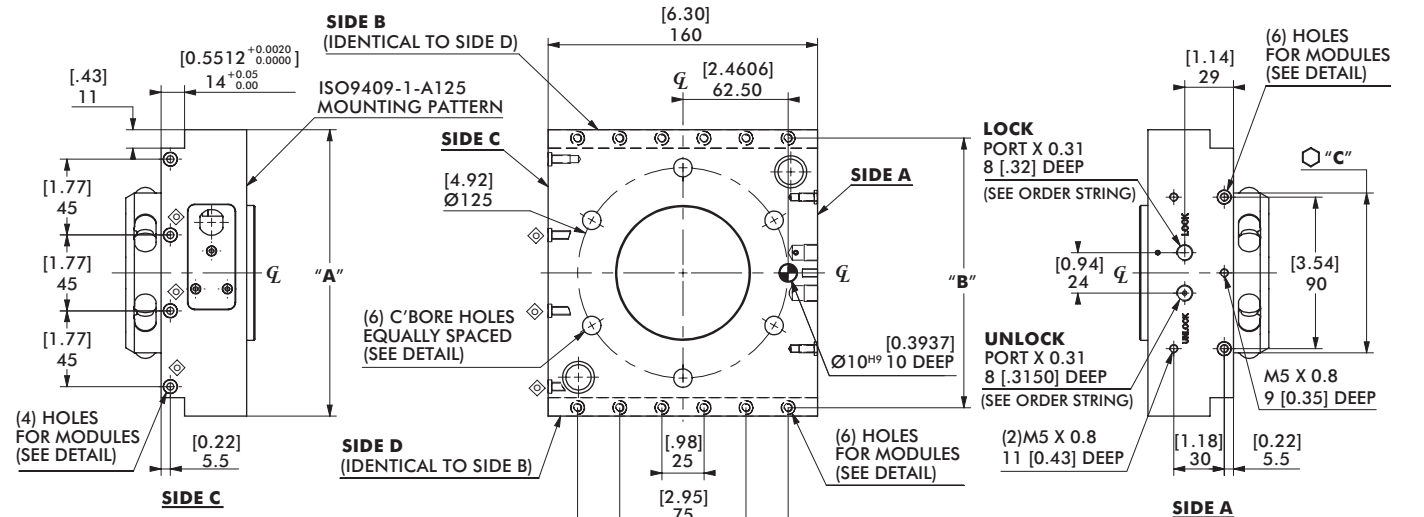
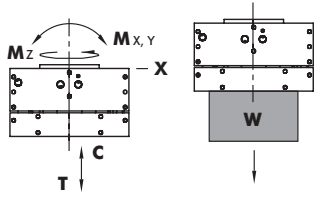
RQC-1200 Specification:

Max. Payload* W: 550 Kg [1200 lb]
 Weight: 6.4 Kg [14.11 lb]
 Cyl. Bore: Ø95mm [3.74in]
 Displacement: 153.7 cm³ [9.38in³]

*Depending on your application
 paramaters please contact DESTACO
 for validation.

Loading Capacity:

Max. Tensile T:
 8000 N [1800 lb]
 Max. Compressive C:
 10700 N [2400 lb]
 Max. Moment (M_x/M_y/M_z):
 3390 Nm [30000 in-lb]



UNLESS OTHERWISE NOTED ALL TOLERANCES ARE AS SHOWN BELOW

IMPERIAL ([IN.])	METRIC (MM)
0.00 = ± .01	[0] = [± .25]
0.000 = ± .005	[0.0] = [± .13]
0.0000 = ± .0005	[0.00] = [± .013]

⌀ DIMENSIONS ARE SYMMETRICAL ABOUT CENTERLINE
 30° THIRD ANGLE PROJECTION
 ALL DOWEL HOLES ARE SF (SLIP FIT). LOCAL TOLERANCE ±.0005" OR [±.013MM]
 ⌀ METRIC THREADS COURSE PITCH

MODEL NUMBER	"A"	"B"	"C"	"D"	"E"	WEIGHT
RQC-800	[6.69] 170.0	[6.2992] 160.0	[3.73] 94.75	[2.00] 50.8	[2.82] 71.75	[11.8 lb] 6.3 kg
RQC-1200	[7.01] 178.0	[6.6142] 168.0	[4.08] 103.6	[2.25] 57.15	[3.31] 84.15	[14.1 lb] 6.4 kg

RTP-800, RTP-1200 (TOOL PLATE)

Automatic Tool Changers | Technical Specifications | Dimensions

RTP-800 Specification:

Max. Payload* **W**: 360 Kg [800 lb]

Weight: 1.8 Kg [3.97 lb]

*Depending on your application parameters please contact DESTACO for validation.

Loading Capacity:

Max. Tensile **T**:

5340 N [1200 lb]

Max. Compressive **C**:

7120 N [1600 lb]

Max. Moment ($M_x/M_y/M_z$):

2490 Nm [22000 in-lb]

RTP-1200 Specification:

Max. Payload* **W**: 550 Kg [1200 lb]

Weight: 1.9 Kg [4.19 lb]

*Depending on your application parameters please contact DESTACO for validation.

Loading Capacity:

Max. Tensile **T**:

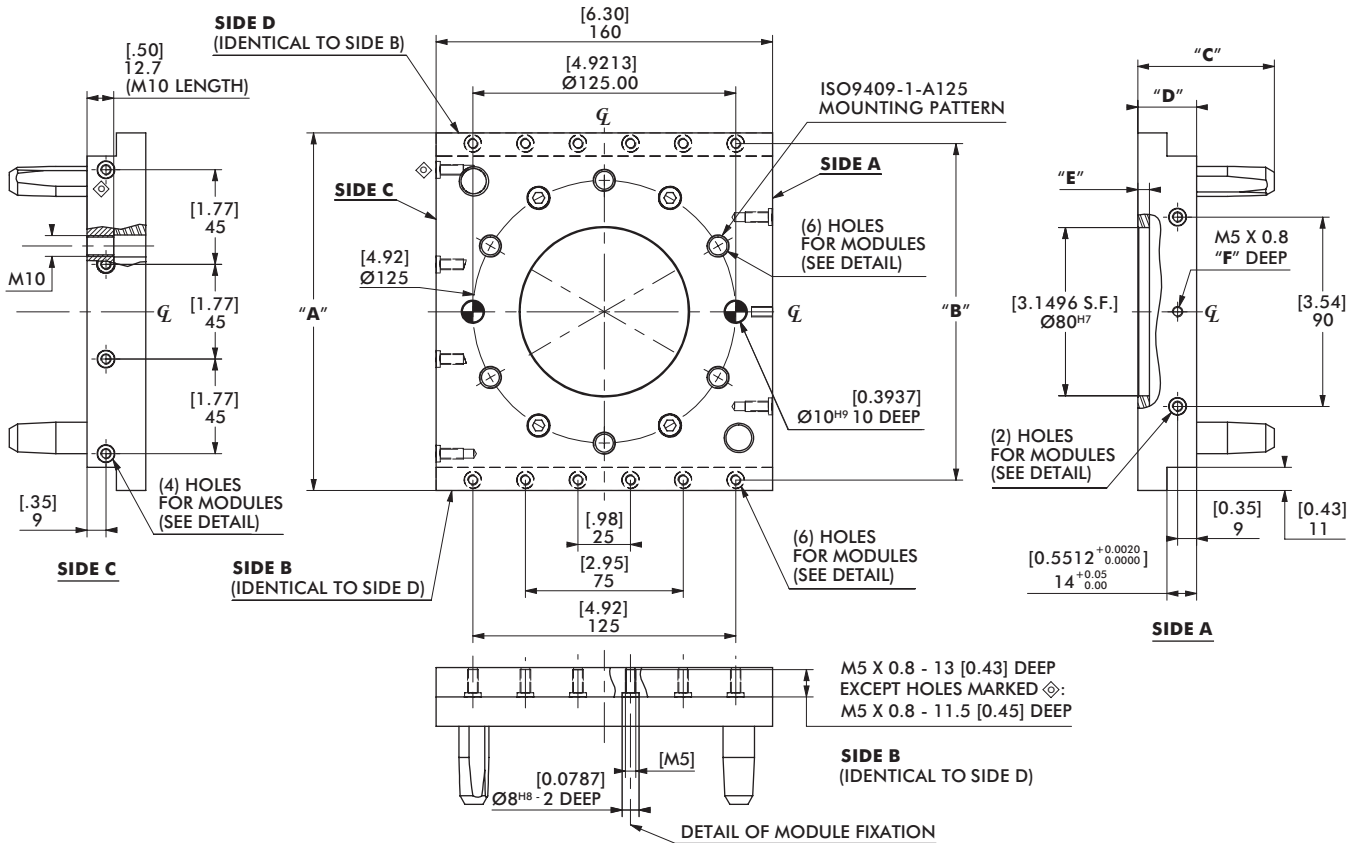
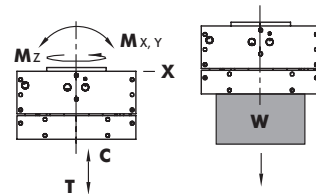
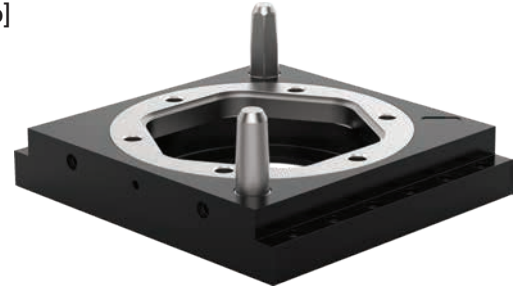
8000 N [1800 lb]

Max. Compressive **C**:

10700 N [2400 lb]

Max. Moment ($M_x/M_y/M_z$):

3390 Nm [30000 in-lb]



UNLESS OTHERWISE NOTED ALL TOLERANCES ARE AS SHOWN BELOW

\varnothing
DIMENSIONS ARE SYMMETRICAL ABOUT CENTERLINE

\triangle
THIRD ANGLE PROJECTION

\oplus
ALL DOWEL HOLES ARE SF (SLIP FIT).
LOCATIONAL TOLERANCE
 ± 0.005 " OR ± 0.13 MM

\oplus
METRIC THREADS
COURSE PITCH

IMPERIAL ([IN.])
0.00 = ± 0.01
0.000 = ± 0.005
0.0000 = ± 0.0005

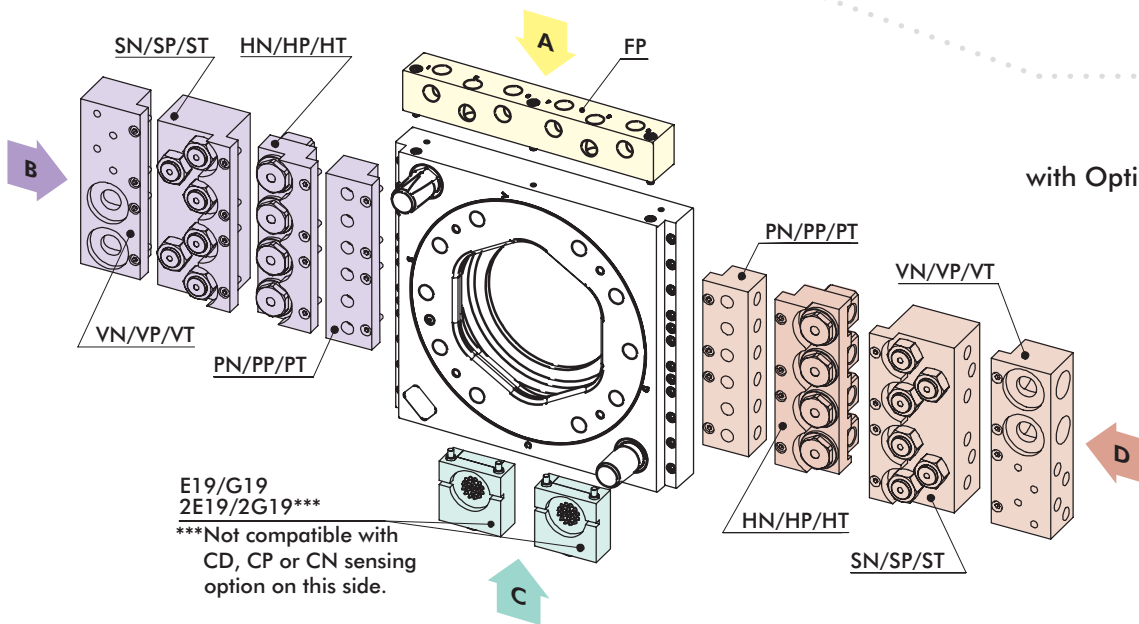
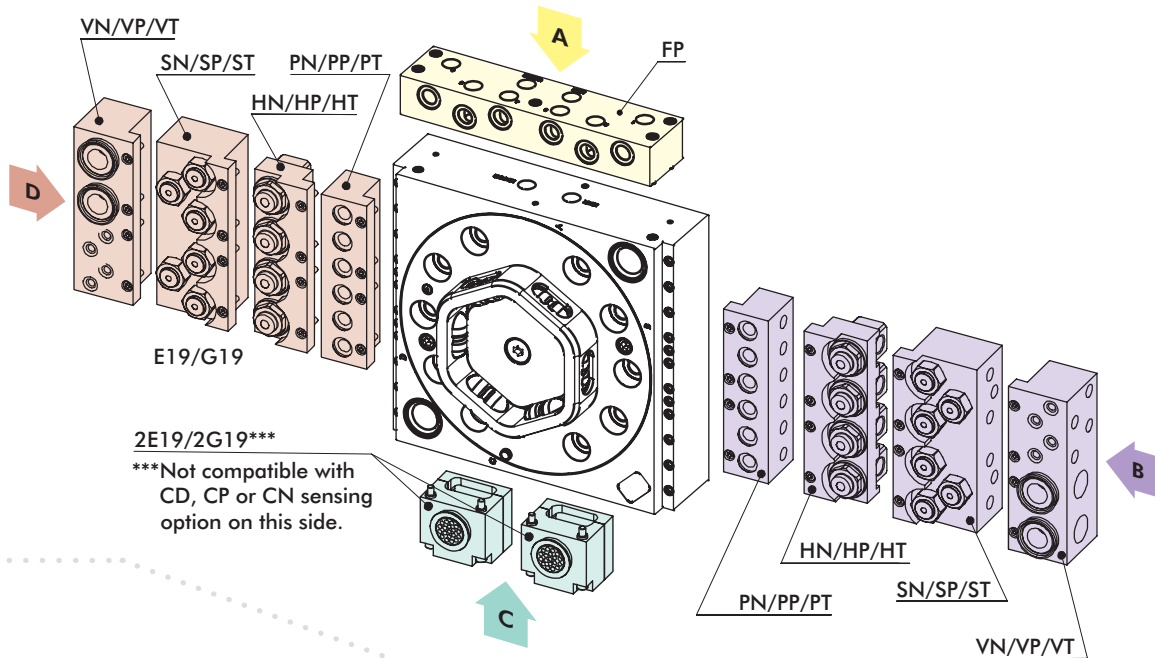
METRIC (MM)
[0] = $\pm .25$
[0.0] = $\pm .13$
[0.00] = $\pm .013$

MODEL NUMBER	"A"	"B"	"C"	"D"	"E"	"F"	WEIGHT
RTP-800	[6.69] 170.0	[6.2992] 160.0	[2.56] 64.94	[1.10] 27.94	[0.22] 5.5	[0.39] 10.0	[4.00 lb] 1.8 kg
RTP-1200	[7.01] 178	[6.6142] 168.0	[2.71] 68.75	[1.25] 31.75	[0.13] 3.25	[0.30] 7.5	[2.90 lb] 1.32 kg

RQC-2400/RTP-2400

Automatic Tool Changers | Module Usage Illustrations

RQC-2400 Robot Plate with Optional Modules

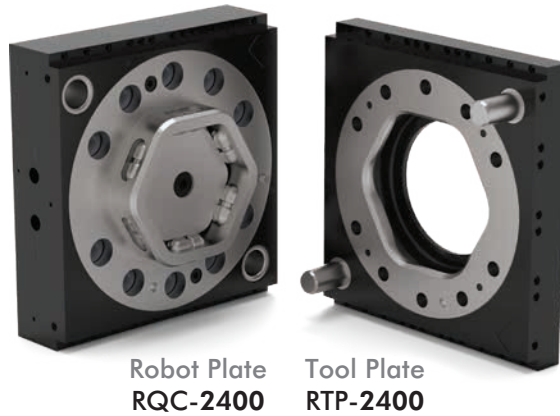


RTP-2400
Tool Plate
with Optional Modules

USER PLUG NOT SHOWN

RQC-2400/RTP-2400

Automatic Tool Changers | Ordering Information



Base Model	Model Size	Port Options (RQC-only)	Sensing (RQC-only)	Side A MODULES	Side B MODULES	Side C MODULES	Side D MODULES
RQC Robot Plate	2400 (See Page 8 for Specifications)	N 1/8 NPT	L0 No Sensing	0	0	0	0
RTP Tool Plate		M 1/8 BSPP	LP* PNP Inductive Sensing				
		A 1/8 BSPT	CP† PNP Inductive Sensing with M12 connector				
			LN* NPN Inductive Sensing				
			CN† NPN Inductive Sensing with M12 connector				
			LD* Dry contact sensor				
			CD† Dry contact sensor with M12 connector				

*Requires E19 or G19 module mounted on Side C.
†Cordset or plug are sold separately.

Optional Air Modules can be ordered with Base Model
See below for Module Description
(See Pg. TC-RQTP-13 for Illustrated Module Config.)

Side A	Side B	Side C	Side D	Order Code	Optional Modules
●	●	●	●	0	No Module
		●		E19†	19 pin, 3 Amp, 48 VDC Module w/Turck M16 Conn, w/o Cordset
		●***		2E19†***	2X 19 pin, 3 Amp, 48 VDC Module w/Turck M16 Conn, w/o Cordset
		●		G19	19 pin, 5 Amp, 120 VDC Module w/Industrial User Conn., w/o Cable
		●***		2G19***	2X 19 pin, 5 Amp, 120 VDC Module w/Industrial User Conn., w/o Cable
●				FP	6X 1/4" BSPP Air Ports Module, Face Seal, 10 Bar
	●		●	PN	6X 1/4" NPT Air Ports Module, Face Seal, 10 Bar
	●		●	PP	6X 1/4" BSPP Air Ports Module, Face Seal, 10 Bar
	●		●	PT	6X 1/4" BSPT Air Ports Module, Face Seal, 10 Bar
	●		●	SN	6X 1/4" NPT Air Ports Module, Self Sealing, 10 Bar
	●		●	SP	6X 1/4" BSPP Air Ports Module, Self Sealing, 10 Bar
	●		●	ST	6X 1/4" BSPT Air Ports Module, Self Sealing, 10 Bar
	●		●	HN	4X 3/8" NPT Fluid Ports Module, 100 Bar
	●		●	HP	4X 3/8" BSPP Fluid Ports Module, 100 Bar
	●		●	HT	4X 3/8" BSPT Fluid Ports Module, 100 Bar

†Cordset or plug are sold separately. ***Not compatible with CD, CP or CN sensing option.

NOTE: Only (1) module can be mounted per side. (Except 2E19 and 2G19, which are composed of (2) modules). Modules usage is based on the size of the Base Model and which side the module can be mounted.

RQC-2400 (ROBOT PLATE)

Automatic Tool Changers | Technical Specifications | Dimensions



RQC-2400 Specification:

Max. Payload* W: 1089Kg [2400 lb]

Weight: 22 Kg [48.5 lb]

Cyl. Bore: Ø80mm [3.15in]

*Depending on your application parameters please contact DESTACO for validation.

Loading Capacity:

Max. Tensile T:

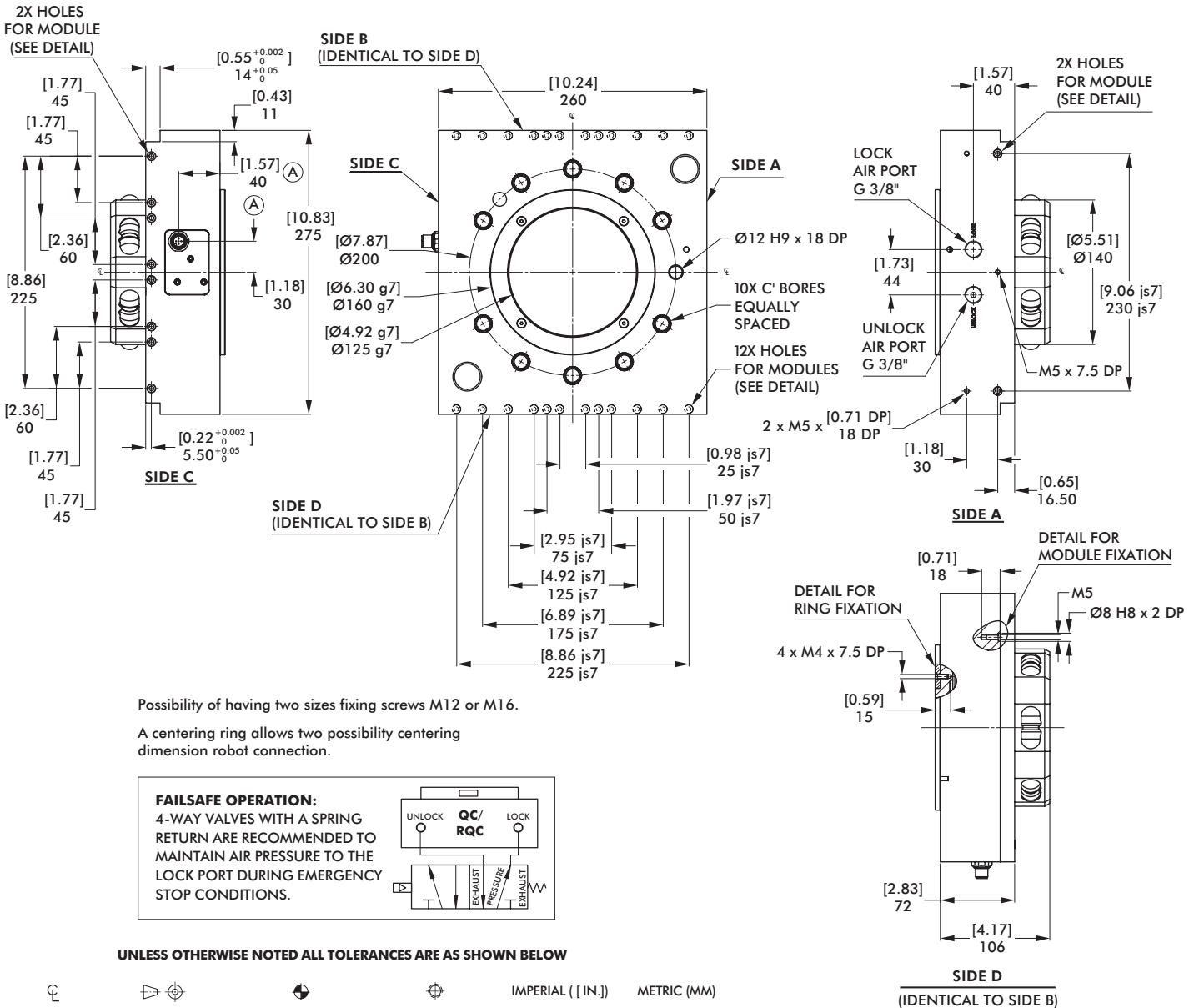
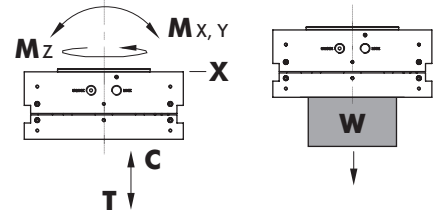
16000 N [3597 lb]

Max. Compressive C:

22000 N [4946 lb]

Max. Moment (M_x/M_y/M_z):

7000 Nm [91955 in-lb]



RTP-2400 (TOOL PLATE)

Automatic Tool Changers | Technical Specifications | Dimensions

RTP-2400 Specification:

Max. Payload* **W**: 1089Kg [2400 lb]

Weight: 8 Kg [17.64 lb]

*Depending on your application parameters please contact DESTACO for validation.

Loading Capacity:

Max. Tensile **T**:

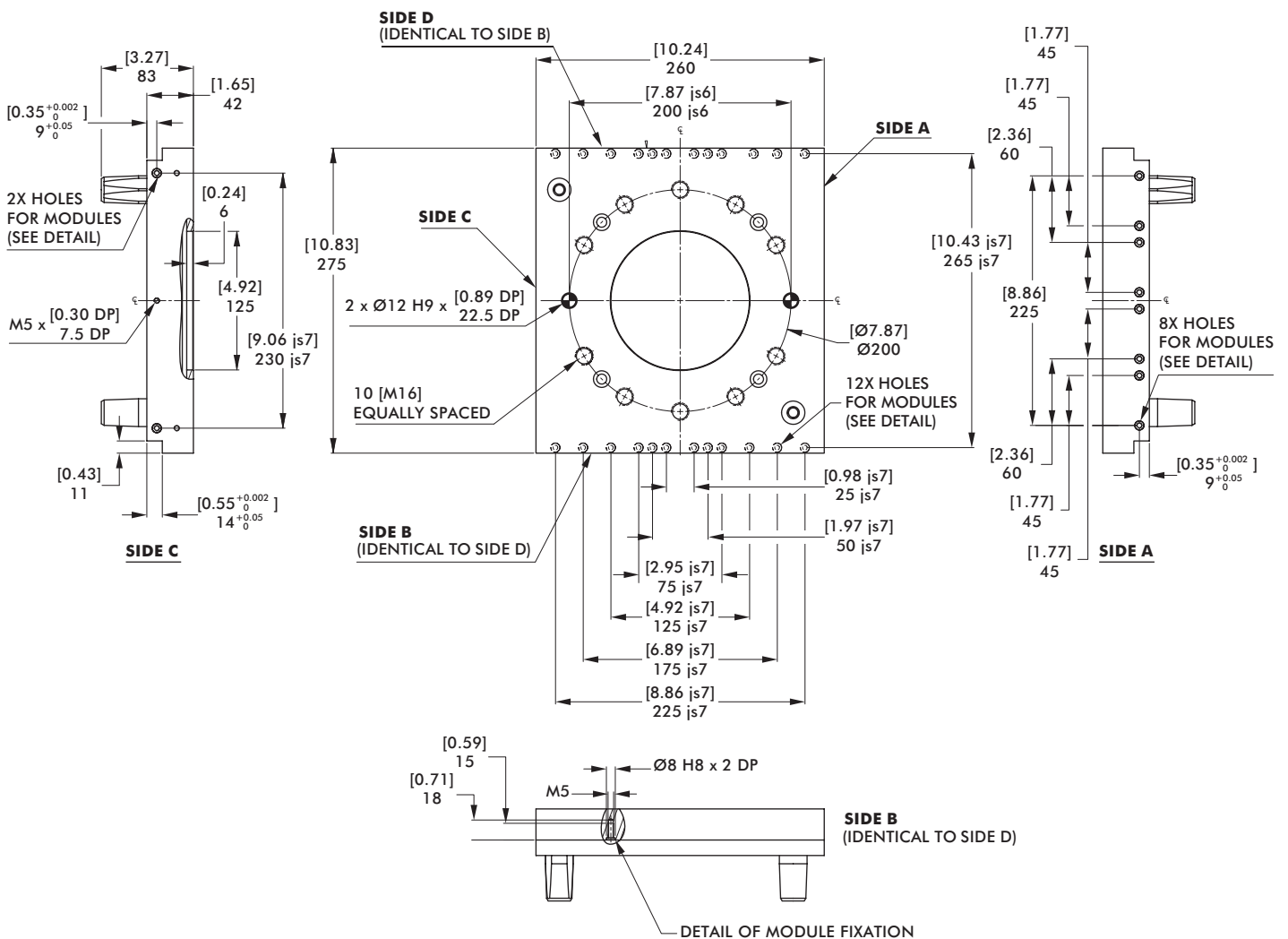
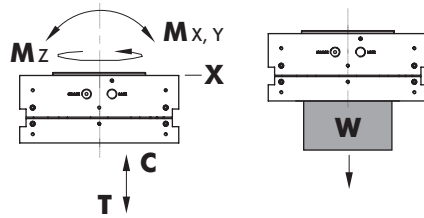
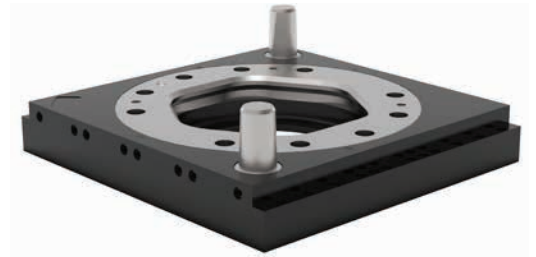
16000 N [3597 lb]

Max. Compressive **C**:

22000 N [4946 lb]

Max. Moment ($M_x/M_y/M_z$):

7000 Nm [91955 in-lb]



UNLESS OTHERWISE NOTED ALL TOLERANCES ARE AS SHOWN BELOW

IMPERIAL ([IN.])	METRIC (MM)
0.00 = ±.01	[0] = [±.25]
0.000 = ±.005	[0.0] = [±.13]
0.0000 = ±.0005	[0.00] = [±.013]

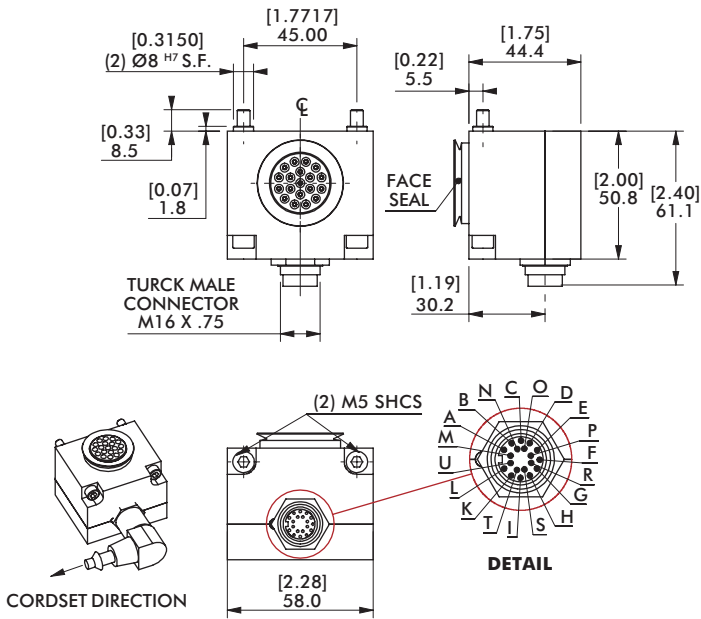
☉ DIMENSIONS ARE SYMMETRICAL ABOUT CENTERLINE
 ☉ THIRD ANGLE PROJECTION
 ☉ ALL DOWEL HOLES ARE SF (SUP FIT). LOCATIONAL TOLERANCE ±.0005" OR [±.013MM]
 ☉ METRIC THREADS COURSE PITCH

RQC/RTP SERIES

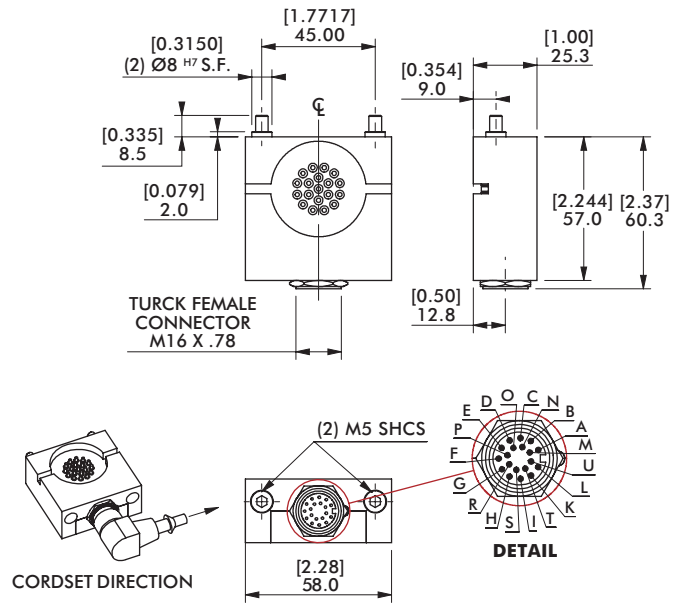
Automatic Tool Changers | Technical Specifications | Dimensions

19 Pin Module 3 Amp - 48 VDC

ROBOT HALF



TOOL HALF



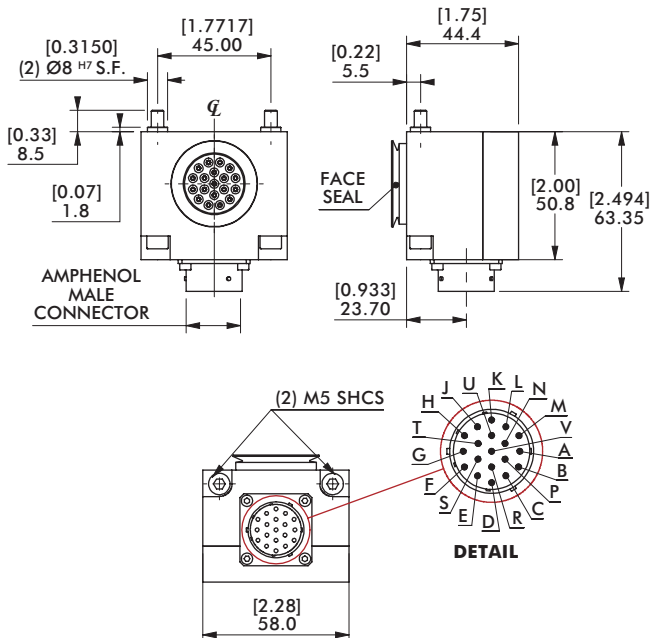
MODULE REPLACEMENT **ROBOT PLATE**
E19 KE19-RQC

Module kits above include:
90° Plug Support (without cable),
indexing sleeves and hardware.

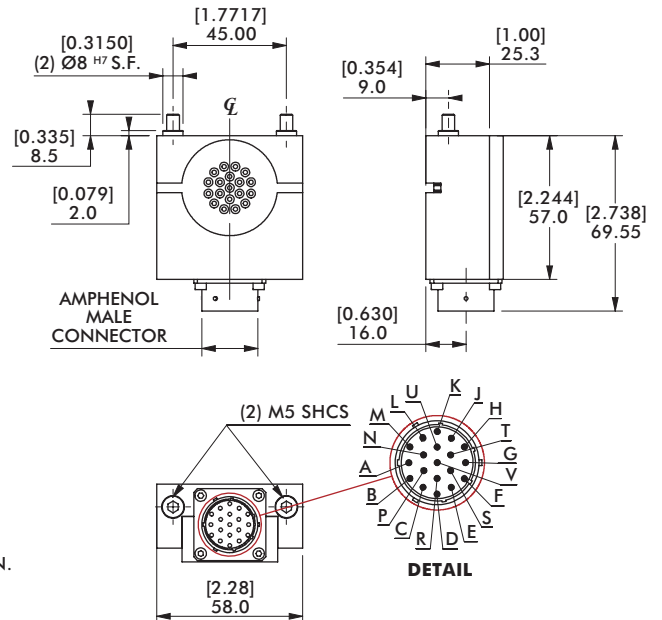
MODULE REPLACEMENT **TOOL PLATE**
E19 KE19-RTP

19 Pin Module 5 Amp - 120 VDC

ROBOT HALF



TOOL HALF



USER
90°
PLUG
NOT
SHOWN.

MODULE REPLACEMENT **ROBOT PLATE**
G19 KG19-RQC

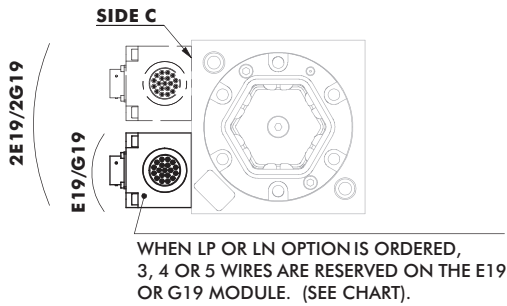
Module kits above include: 90°
Plug support (without cable), in-
dexing sleeves and hardware.

MODULE REPLACEMENT **TOOL PLATE**
G19 KG19-RTP

RQC/RTP SERIES

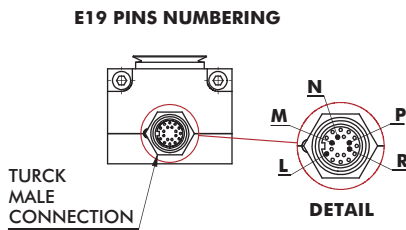
Automatic Tool Changers | Technical Specifications | Dimensions

Modules Connecting with Latch/Unlatch Sensors

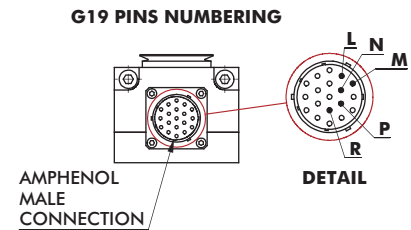


Reserved Pin Numbers on E19/G19		
Sensor/Switch	RQC 200 & 400	RQC 800, 1200, 2400
LP or LN (Inductive)	R: + 10 - 30 VDC	R: + 10 - 30 VDC
	L: Common	L: Common
	M: Lock	M: Lock
	N: Unlock	N: Unlock
LD (Dry Contact)	R: + 10 - 30 VDC	R: + 10 - 30 VDC
	L: Common	L: Common
	M: Lock	M: Lock
	N: Unlock	N: Unlock

Pin Numbering



Wire Color on CABL-029 Cordset	
Contact	Wire Color
R	Red
L	Brown
M	Orange
N	Grey/Brown
P	White

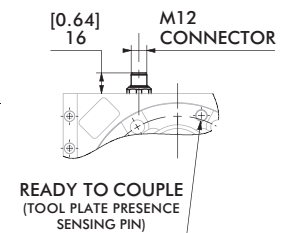
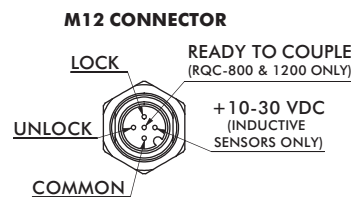
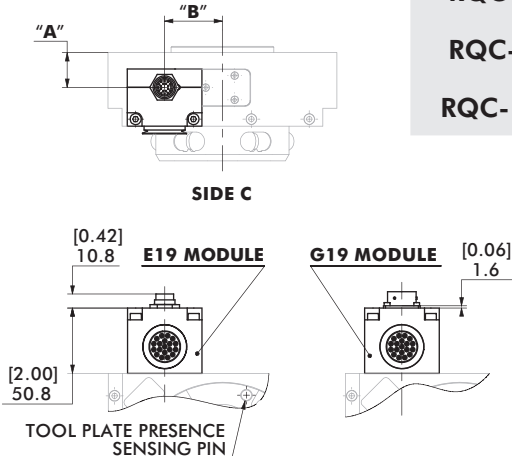
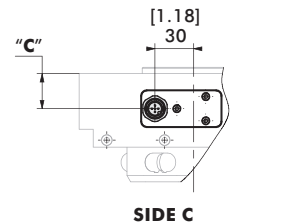


Lock/Unlock Tool Plate Presence Sensing Options (with inductive Sensors and Dry Contact Switches)

SENSING ACCESSORIES LP, LN, OR LD USING 19 PINS MODULES E19 OR G19 (REQUIRES 3, 4, OR 5 OF THE 19 PINS) (AS SHOWN ABOVE)

MODEL	"A"	"B"	"C"
RQC-200	[0.563] 14.3	[0.886] 22.5	[0.652] 16.55
RQC-400	[0.811] 20.6	[1.329] 33.7	[0.685] 17.4
RQC-800	[0.811] 20.6	[1.772] 45.0	[0.821] 20.8
RQC-1200	[1.061] 26.9	[1.772] 45.0	[1.071] 27.2

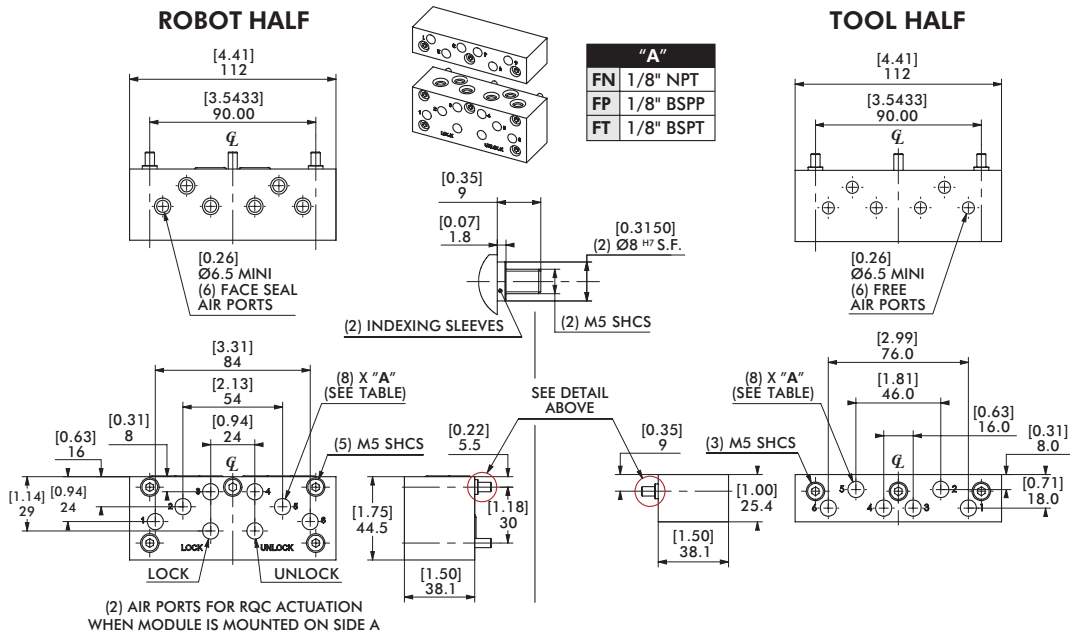
SENSING ACCESSORIES CP, CN, OR CD BY M12 CONNECTOR (3, 4, OR 5 PINS) (SEE BELOW)



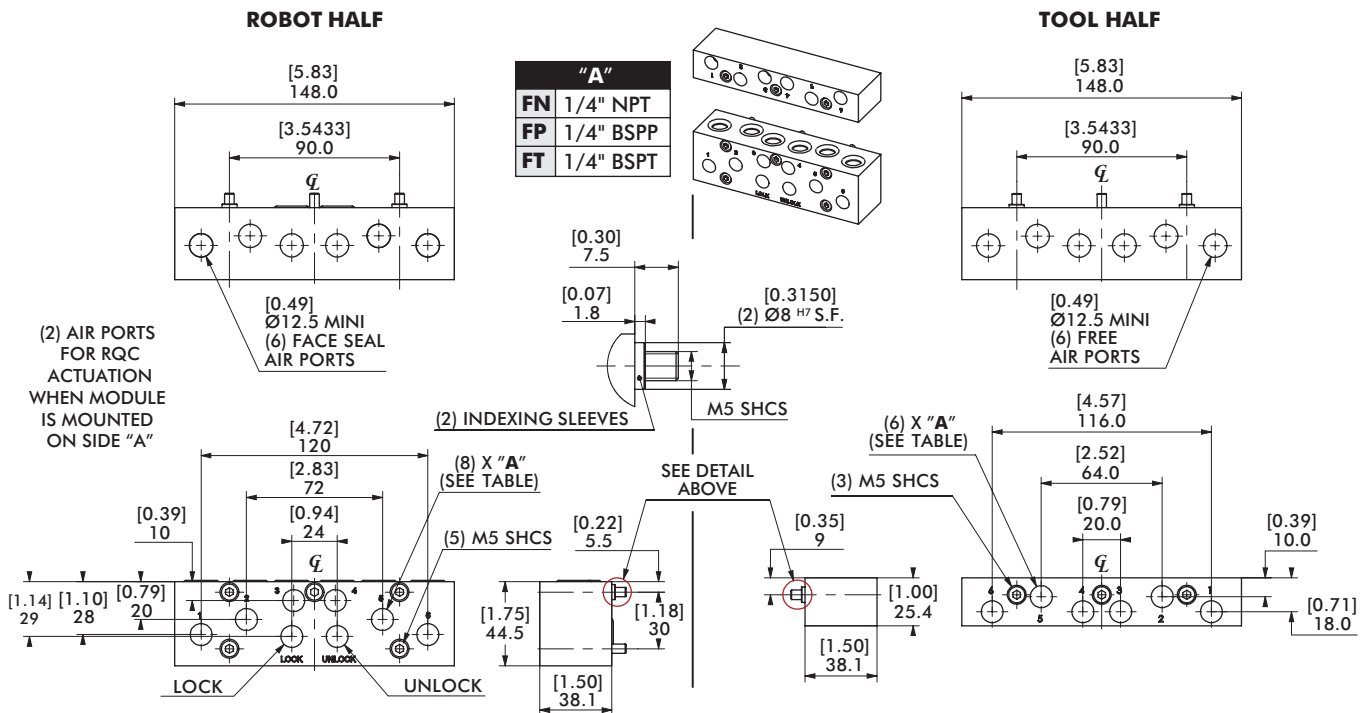
RQC/RTP SERIES

Automatic Tool Changers | Technical Specifications | Dimensions

6 x 1/8" Air Ports Module | Face Seal (for RQC/RTP-200 & RQC/RTP-400)



6 x 1/4" Air Ports Module | Face Seal (for RQC/RTP-800, -1200)



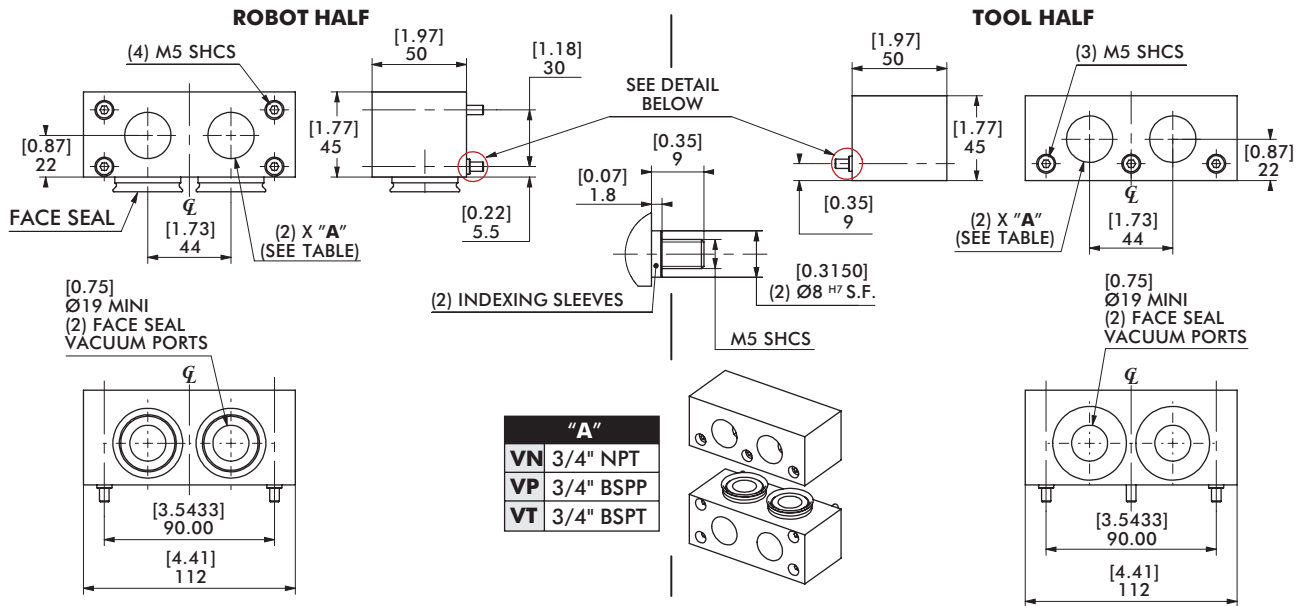
MODULE REPLACEMENT	RQC-200/400	RQC 800/1200	MODULE REPLACEMENT	RTP-200/400	RTP 800/1200
FN	KFN-RQC200	KFN-RQC800	FN	KFN-RTP200	KFN-RTP800
FP	KFP-RQC200	KFP-RQC800	FP	KFP-RTP200	KFP-RTP800
FT	KFT-RQC200	KFT-RQC800	FT	KFT-RTP200	KFT-RTP800

Module kits above include: Couplings, indexing sleeves and hardware.

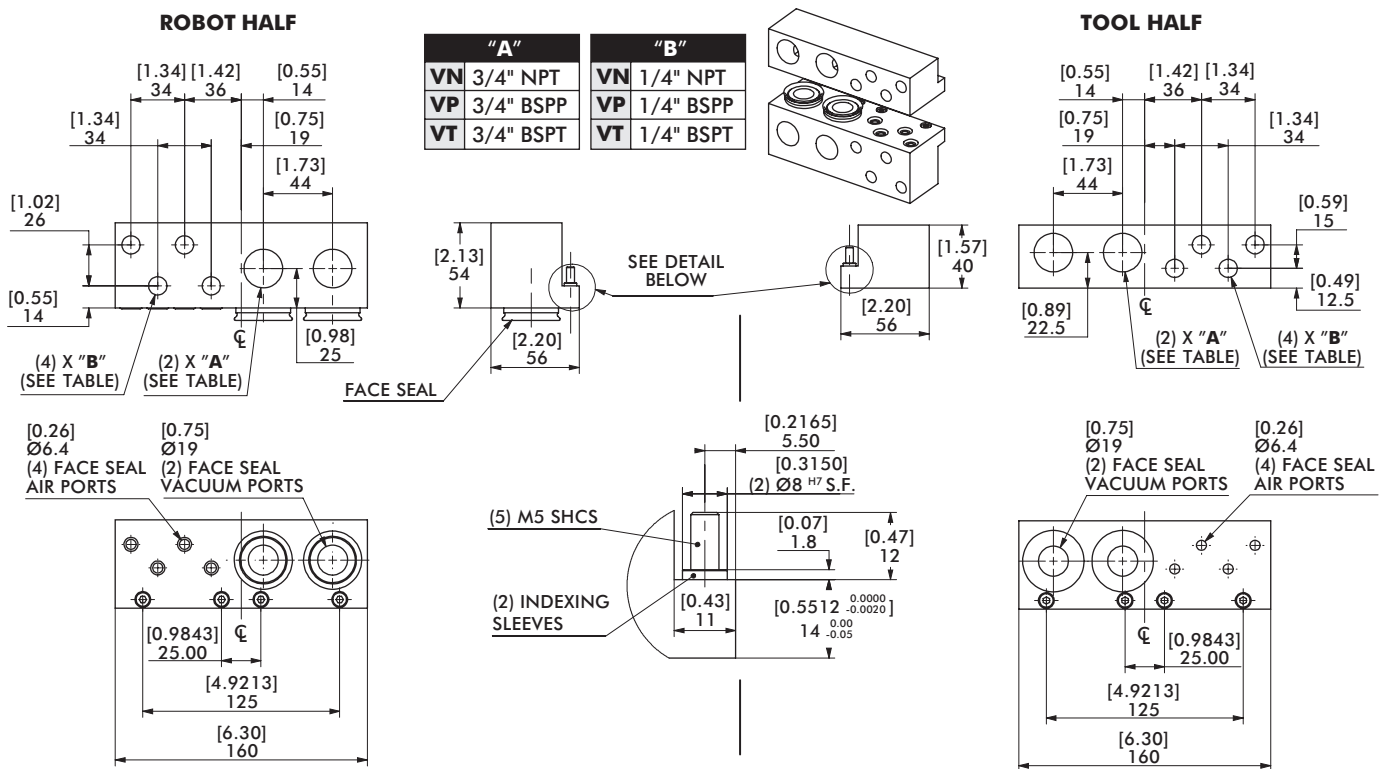
RQC/RTP SERIES

Automatic Tool Changers | Technical Specifications | Dimensions

2 x 3/4" Vacuum Ports Module | Face Seal (for RQC/RTP-200 & RQC/RTP-400)



2 x 3/4" Vacuum Ports Module | Face Seal (for RQC/RTP-800, -1200, -2400)



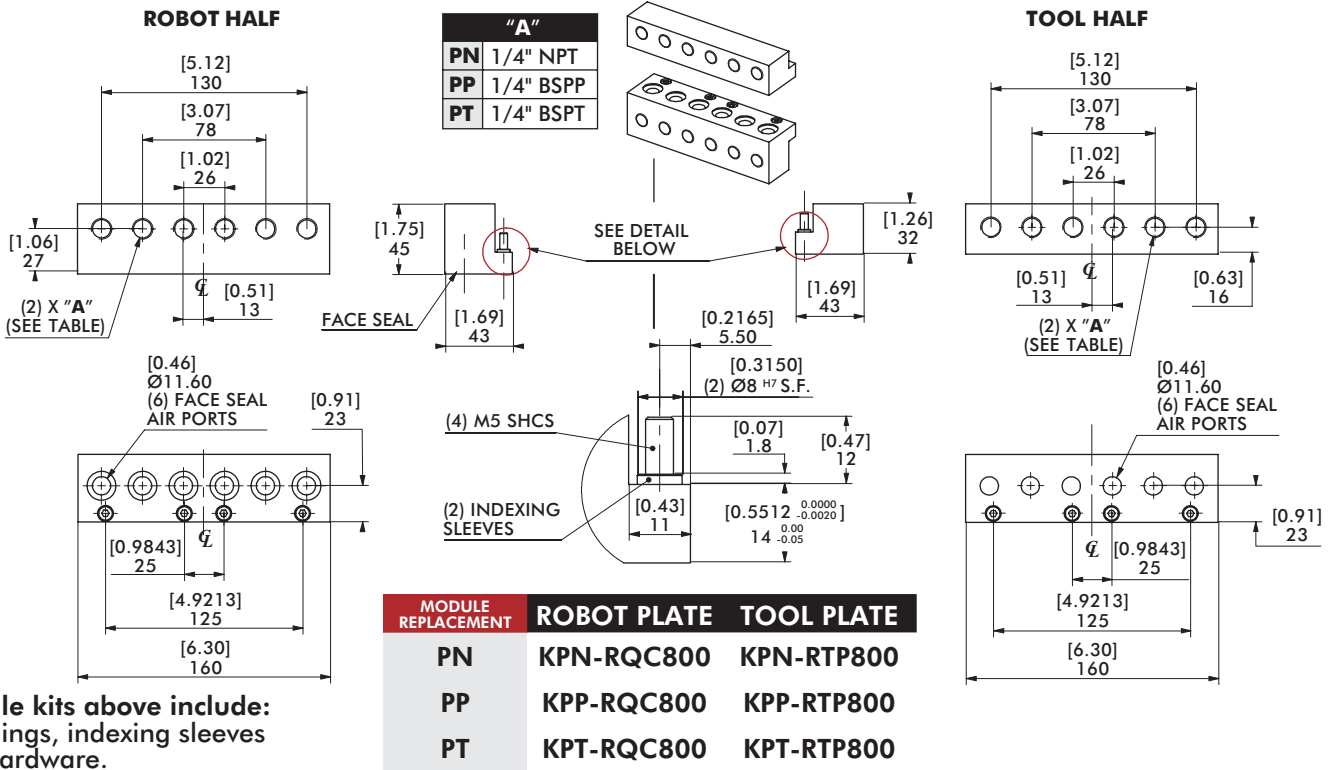
MODULE REPLACEMENT	RQC-200/400	RQC 800/1200/2400	MODULE REPLACEMENT	RTP-200/400	RTP 800/1200/2400
VN	KVN-RQC200	KVN-RQC800	VN	KVN-RTP200	KVN-RTP800
VP	KVP-RQC200	KVP-RQC800	VP	KVP-RTP200	KVP-RTP800
VT	KVT-RQC200	KVT-RQC800	VT	KVT-RTP200	KVT-RTP800

Module kits above include: Couplings, indexing sleeves and hardware.

RQC/RTP SERIES

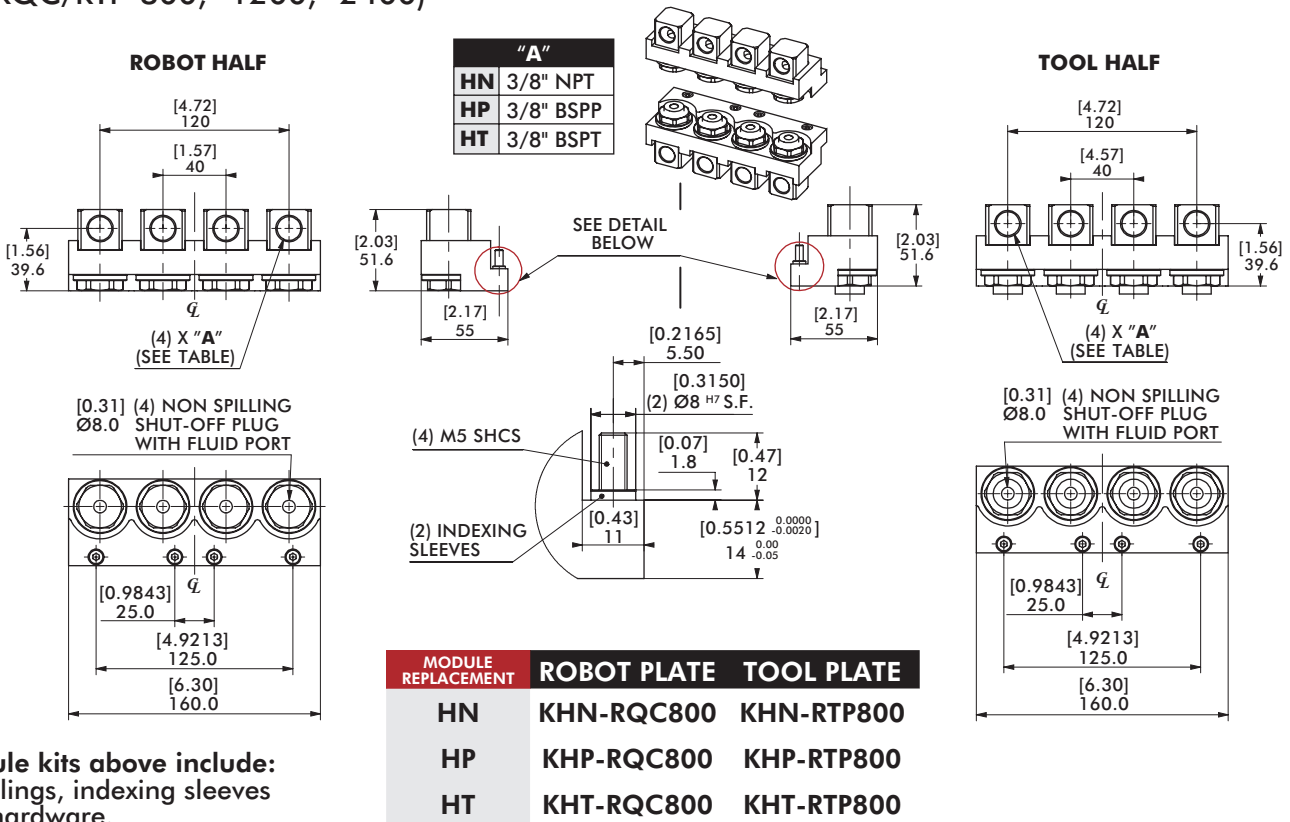
Automatic Tool Changers | Technical Specifications | Dimensions

6 x 1/4" Air Ports Module | Face Seal (for RQC/RTP-800, -1200, -2400)



Module kits above include: Couplings, indexing sleeves and hardware.

4 x 3/8" Fluid Ports Module | Non Spilling | Double Shut-Off (for RQC/RTP-800, -1200, -2400)

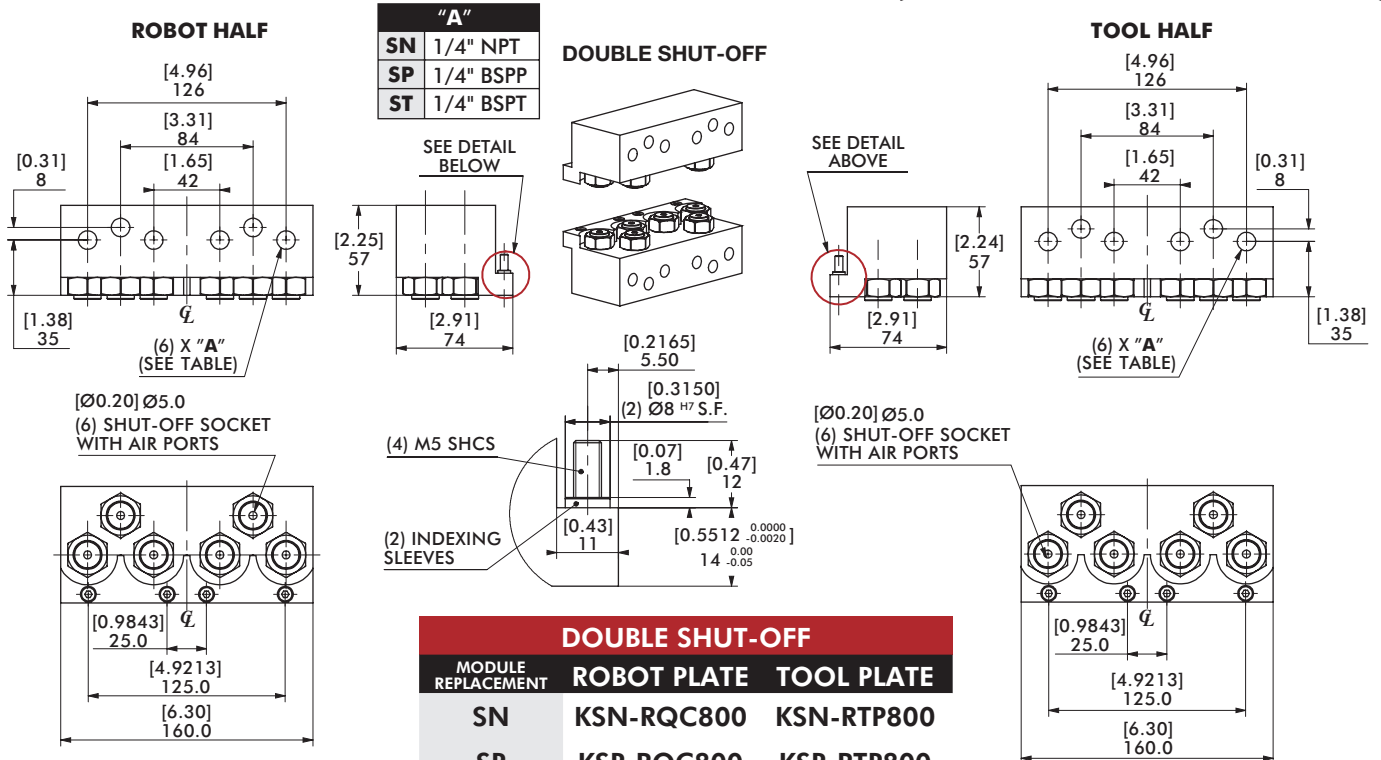


Module kits above include: Couplings, indexing sleeves and hardware.

RQC/RTP SERIES

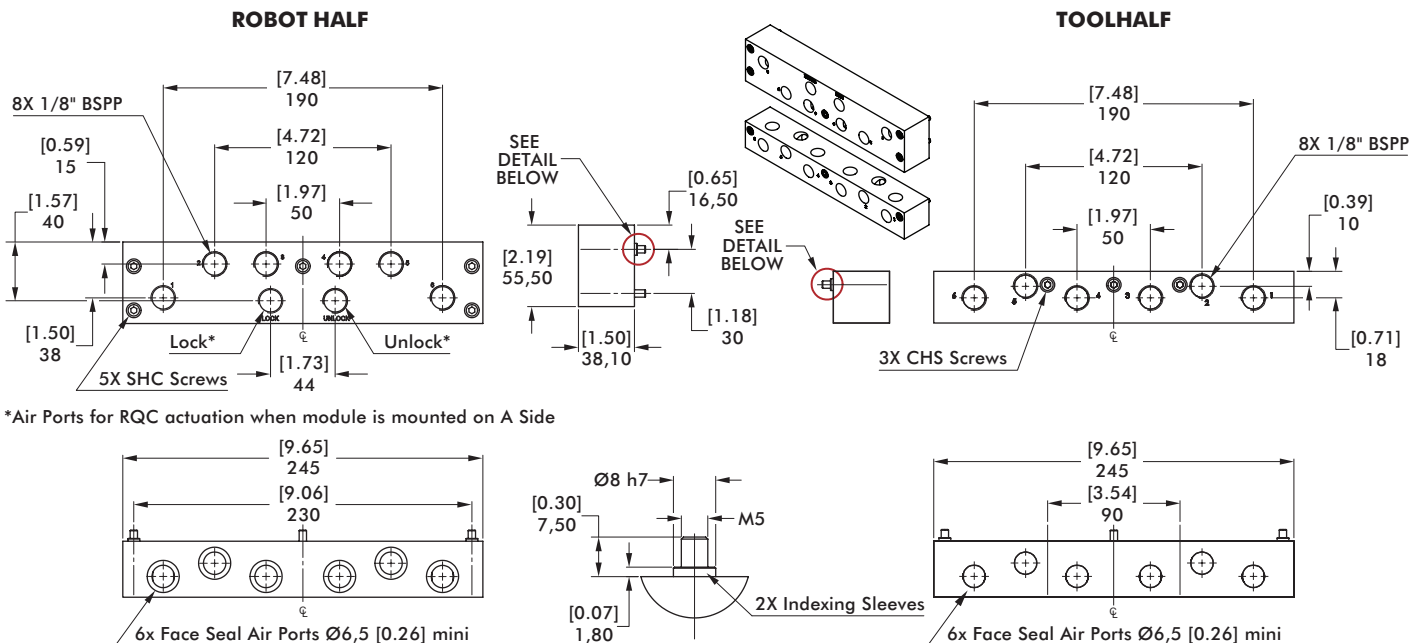
Automatic Tool Changers | Technical Specifications | Dimensions

6 x 1/4" Air Ports Module | Double Shut-Off Flat Face (SN/SP/ST) (for RQC/RTP-800, -1200, -2400)



Module kits above include:
Couplings, indexing sleeves
and hardware.

8 x 1/8" Air Ports Module | Face Seal (FN) (for RQC/RTP-2400)



Module kits above include:
Couplings, indexing sleeves
and hardware.